

# SECTION 8

## **CONSTRUCTION STANDARDS**

## STRUCTURE TYPES GENERAL DISCUSSION

The structures can be grouped into the following classes: -

(1) **Type “A”** - Tangent Structures  
 - Little or no angle  
 - Single cross arm and/or pole top pin

(2) **Type “B”** - Small Angle Structures  
 - Small line angles  
 - Single pole top pin

(3) **Type “B2”** - Small to medium angle structures  
 - Small to medium line angles  
 - Double cross arm and/or pole top pin

(4) Conductor termination/deadend structures:

**Type “D”** - Deadend both ways


**Type “DD”** - Deadend both ways with line disconnects.

**Type “DE”** - Deadend, line termination.

**Type “DV”** - Vertical construction, large angles **Single phase and Transmission Only**

The maximum line angle applicable for each structure type and conductor size is tabulated in the chart on page 8-2.

The structure types are designated by the number of PHASES; 1A or 3A (one phase & three phase, type “A”); 1B2 or 3B2 (one phase and three phase type “B2”, etc.)

 <p>457 NORTH SOUND RD.                  P.O. BOX 38 G.T., GRAND CAYMAN,                  CAYMAN ISLANDS, B. W. I.                  TELEPHONE: (345)-945-5300/5200</p>	DATE: May 10, 2018	<b>DISTRIBUTION STANDARDS</b>	
	DRAWN: C. Rose		
	REV.:	<b>STRUCTURE TYPES</b>	
	DATE:		
		APPROVED BY:	<b>STANDARD NO.</b> <b>8-1</b>
	DATE:		

**MAXIMUM LINE ANGLES**

The maximum line angle for structures is dependent on loading limitations on the structure, its individual components, and the type guying arrangement. See standard pages 6-9 to 6-11 for further details on guying.

Single phase lines will normally use 2/0 AAC conductor and require four structure types: “1A” (up to 25°), “1B2” (25° – 50°), “1DV” (50° – 90°) and a “1DE” for the termination structure.

Three Phase lines, with 2/0 AAC, 4/0 AAC & 477 AAC conductor will require type “A”, “B”, “B2” “3Buckarm”, “3AY” or/and “DE” structures.

Type “D” structures will normally only be required for line disconnects and for construction purposes.

Double Circuit Distribution Framings will be similar structures as the Three Phase Lines but doubled with the minimum distance between feeders will be four feet.

<b>MAXIMUM LINE ANGLE PER STRUCTURE TYPE</b>			
<b>STRUCTURE TYPE</b>	<b>MAXIMUM LINE ANGLE/CONDUCTOR SIZE</b>		
	<b>447</b>	<b>4/0 ACC</b>	<b>2/0 AAC</b>
1A	-	2	5
3A	-	2	5
1B	-	-	25
1B2	-	-	40/50 <sup>1</sup>
3B2	10/25 <sup>2</sup>	20/40 <sup>3</sup>	20/30/40/50 <sup>1</sup>
3BUCKARM	90	90	90
1D,3D	10/25 <sup>4</sup>	20/40 <sup>5</sup>	40/60 <sup>1</sup>
1DV	-	90	90

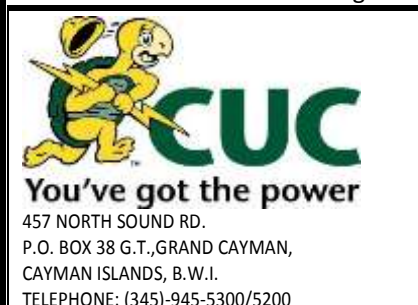
<sup>1</sup> See Standard 6-9 for angle limitation based on guying arrangement.

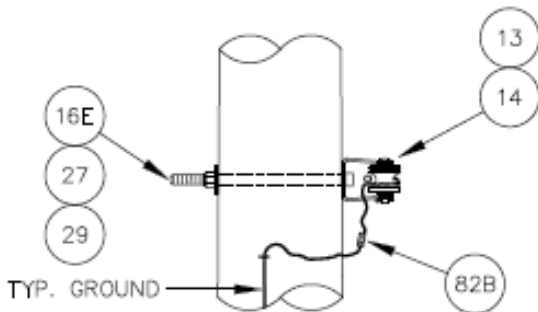
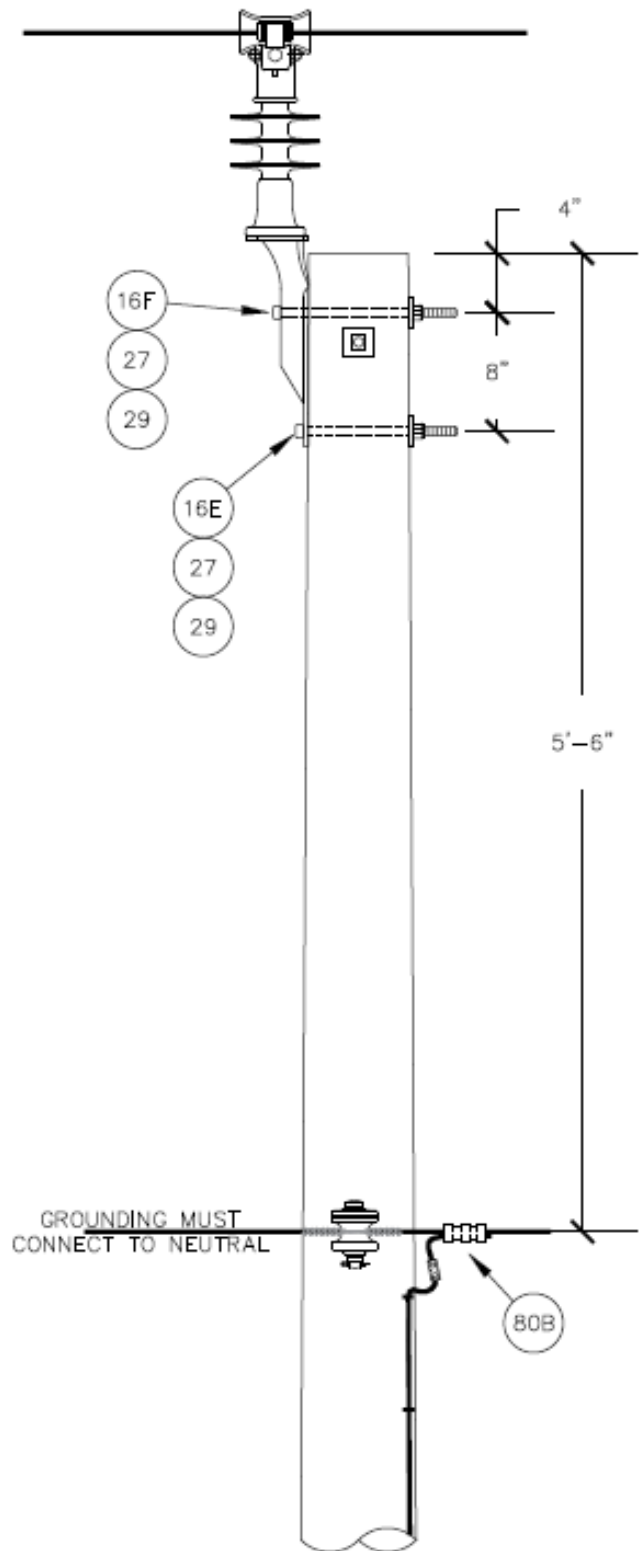
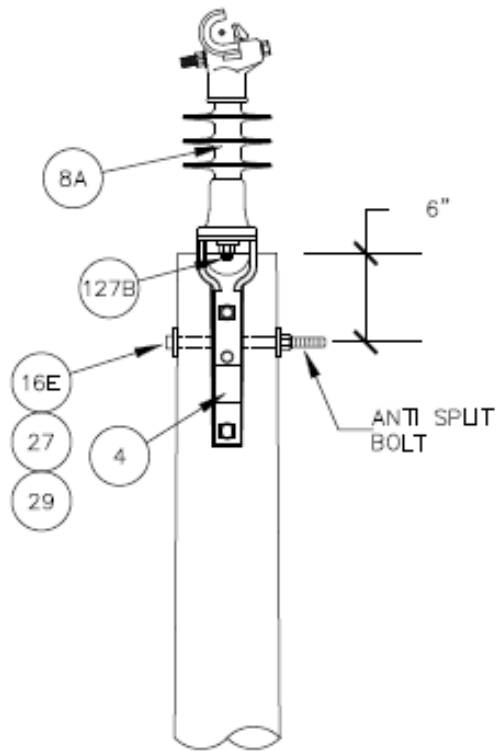
<sup>2</sup> See Standard 6-11 for angle limitation based on guying arrangement.

<sup>3</sup> See Standard 6-10 for angle limitation based on guying arrangement.

<sup>4</sup> See Standard 6-11 for angle limitation based on guying arrangement as per 3B2.

<sup>5</sup> See Standard 6-10 for angle limitation based on guying arrangement as per 3B2.

	DATE: May 10, 2018	<b>DISTRIBUTION STANDARDS</b>	
	DRAWN: C. Rose		
	REV.:	<b>MAXIMUM LINE ANGLES</b>	
	DATE:		
		APPROVED BY:	<b>STANDARD NO.</b> <b>8-2</b>
	DATE:		



**NOTES:**

1. GROUNDING DETAILS, PG. 11-2/4.
2. LINE ANGLE LIMITATION, PG. 8-2.
3. 1A TO BE USED IN MAINLINE CONSTRUCTION.
4. 1A-SS TO BE USED IN MAINLINE CONSTRUCTION IN COASTAL AREAS AS SPECIFIED.



DATE: FEB. 2018	<b>DISTRIBUTION STANDARDS</b>	
DRAWN: C.CRAIG		
REV: F	<b>STRUCTURE "1A"</b>	
DATE: February 3, 2018		
APP. BY:	PAGE	<b>STANDARD NO.</b>
DATE:	1 of 2	

ITEM	Quantity		DESCRIPTION	STOCK NO.
	Galv.	SS		
4	1		BRACKET - POLE TOP	108-00019
8A	1		KTYPE INSULATOR, Galv Base	457-00012
8B		1	INSULATOR - KTYPE, AL BASE	457-00004
13	1	1	INSULATOR - SPOOL, CLASS 53-2	457-00008
14	1		CLEVIS - SECONDARY DEADEND, 3 1/2"X 4"	185-00002
16E	3		BOLT - MACH, 5/8" X 12", Galv.	098-00015
16F	1		BOLT - MACH, 5/8" X 14", Galv.	098-00016
27	5		WASHER - SQUARE, 2 1/4", 11/16" HOLE	973-00005
29	4		WASHER - LOCK, DOUBLE COIL, 5/8"	973-00011
80B	1	1	CRIMPIT - CABLELOK, ALUM, 2/0-2	253-00008
82B	1	1	SLEEVE - SERVICE ENTRANCE, 2-6 (RED-BLUE)	785-00004
98A	AR	AR	WIRE-BARE COPPER, SOFT DRAWN #4 SOL	983-00010
127B	1		STUD, 3/4" LINE POST INSULATOR, SHORT SHANK	840-00002
135E		3	BOLT - MACHINE, 5/8" X 12", SS	098-00039
135F		1	BOLT - MACHINE, 5/8" X 14", SS	098-00040
136F		1	BOLT - MACHINE, 3/4" X 3 1/2", SS, FULL THREAD	New Item
153		5	WASHER - FLAT SQ., 2 1/4", 11/16" HOLE, SS	973-00009
158		4	WASHER - LOCK, 5/8", SINGLE COIL, SS	973-00010
159		1	WASHER - LOCK, 3/4", SINGLE COIL, SS	973-00017
164		1	CLEVIS - SECONDARY, STAINLESS	185-00007
165		1	BRACKET - POLE TOP, SS	New Item



DATE: FEB. 2018

DRAWN: C. CRAIG

REV.: G

DATE: May 30, 2019

APPROVED BY: C. Rose

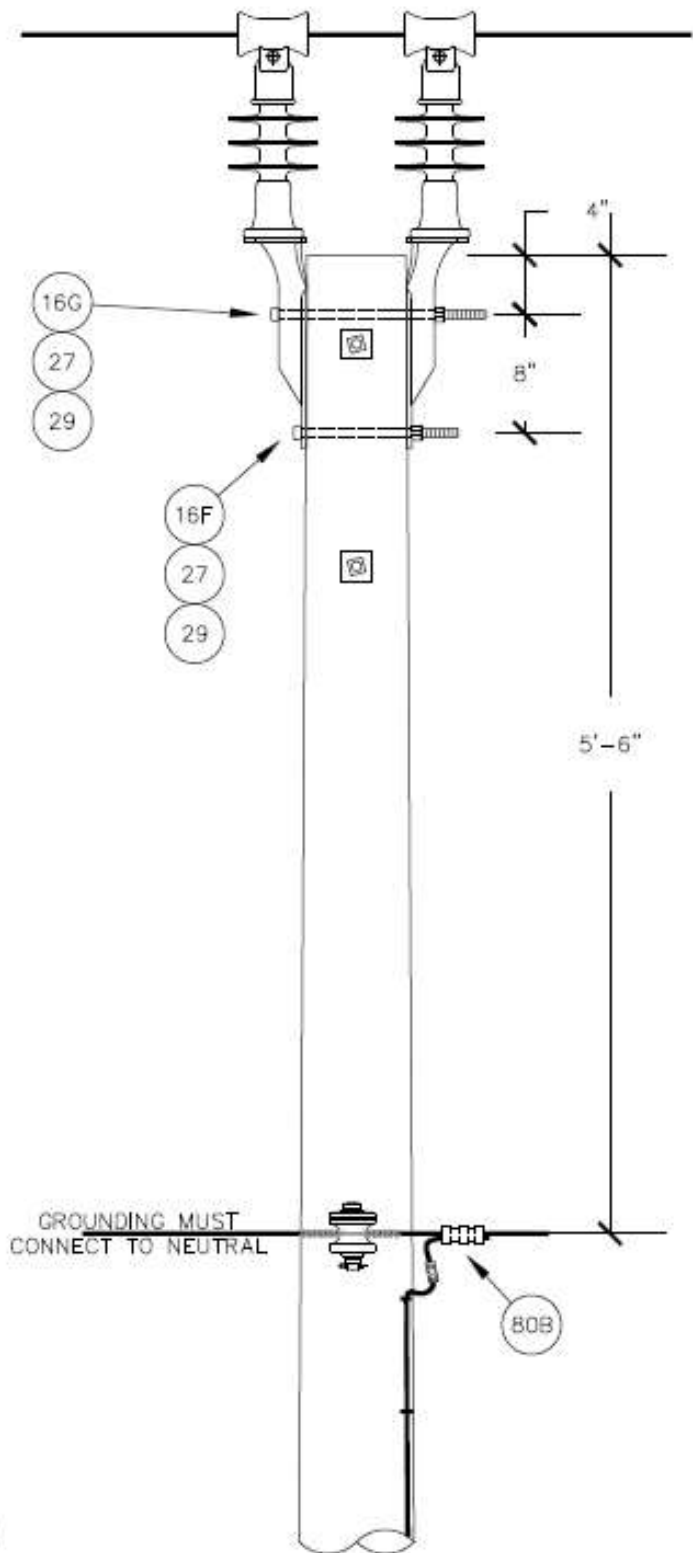
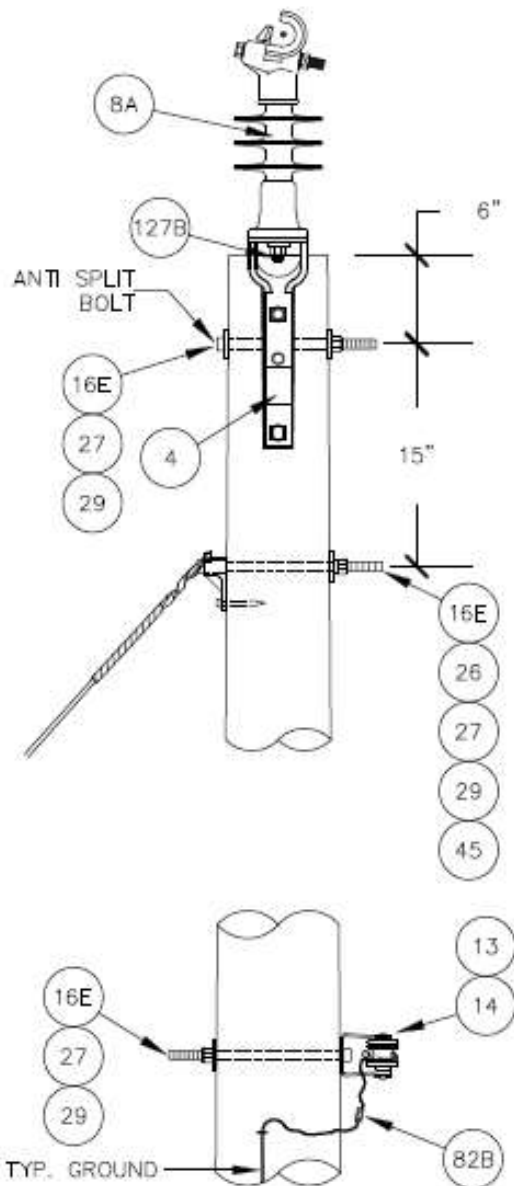
DATE: May 30, 2019

## DISTRIBUTION STANDARDS

### STRUCTURE "1A"

STANDARD NO.

8-4



**NOTES:**

1. GROUNDING DETAILS, PG. 11-2/4.
2. LINE ANGLE LIMITATION, PG. 8-2.
3. 1B2 TO BE USED IN MAINLINE CONSTRUCTION.
4. 1B2-SS TO BE USED IN MAINLINE CONSTRUCTION IN COASTAL AREAS AS SPECIFIED.



DATE:	FEB. 2018
DRAWN:	C.CRAIG
REV:	F
DATE:	February 3, 2018
APP. BY:	
DATE:	

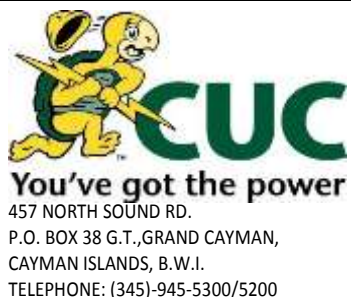
**DISTRIBUTION STANDARDS**

**STRUCTURE "1B2"**

PAGE  
1 of 2

STANDARD NO.  
8-5

ITEM	QUANTITY		DESCRIPTION	STOCK NO.
	Galv.	SS		
4	2		BRACKET - POLE TOP	108-00019
8A	2		KTYPE INSULATOR, Galv Base	457-00012
8B		2	INSULATOR - KTYPE, AL BASE	457-00004
13	1	1	INSULATOR - SPOOL, CLASS 53-2	457-00008
14	1		CLEVIS - SECONDARY DEADEND, 3 1/2" X 4"	185-00002
16E	3		BOLT - MACH, 5/8" X 12", Galv.	098-00015
16F	1		BOLT - MACH, 5/8" X 14", Galv.	098-00016
16G	1		BOLT - MACH, 5/8" X 16", Galv.	098-00017
26	1		SCREW - LAG, TWIST DRIVE/DRIVE POINT, 1/2" X 4"	744-00002
27	4		WASHER - SQUARE, 2 1/4", 11/16" HOLE	973-00005
29	5		WASHER - LOCK, DOUBLE COIL, 5/8"	973-00011
45	1		HOOK - GUY, DUCTILE IRON, 5/8", HDG	437-00001
80B	1	1	CRIMPIT - CABLELOK, ALUM, 2/0-2	253-00008
82B	1	1	SLEEVE - SERVICE ENTRANCE, 2-6 (RED-BLUE)	785-00004
98A	AR	AR	WIRE-BARE COPPER, SOFT DRAWN #4 SOL	983-00010
127B	2		STUD, 3/4" LINE POST INSULATOR, SHORT SHANK	840-00002
135E		3	BOLT - MACHINE, 5/8" X 12", SS	098-00039
135F		1	BOLT - MACHINE, 5/8" X 14", SS	098-00040
135G		1	BOLT - MACHINE, 5/8" X 16", SS	098-00041
136F		2	BOLT - MACHINE, 3/4" X 3 1/2", SS, FULL THREAD	New Item
153		4	WASHER - FLAT SQ., 2 1/4", 11/16" HOLE, SS	973-00009
158		5	WASHER - LOCK, 5/8", SINGLE COIL, SS	973-00010
159		2	WASHER - LOCK, 3/4", SINGLE COIL, SS	973-00017
164		1	CLEVIS - SECONDARY, STAINLESS	185-00007
165		2	BRACKET - POLE TOP, SS	New Item



DATE: FEB. 2018

DRAWN: C. CRAIG

REV.: G

DATE: May 30, 2019

APPROVED BY: C. Rose

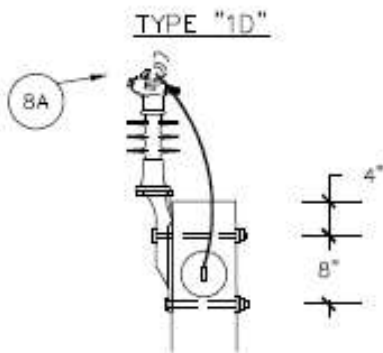
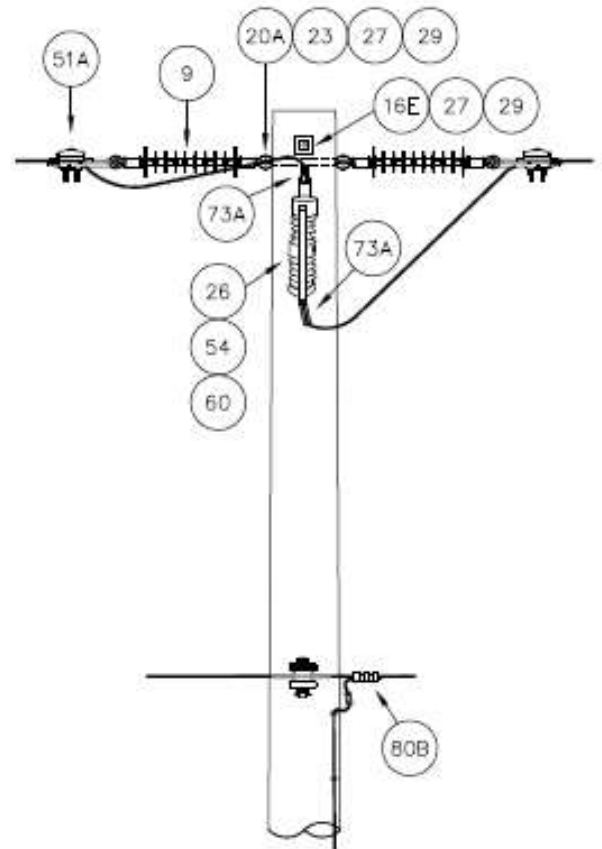
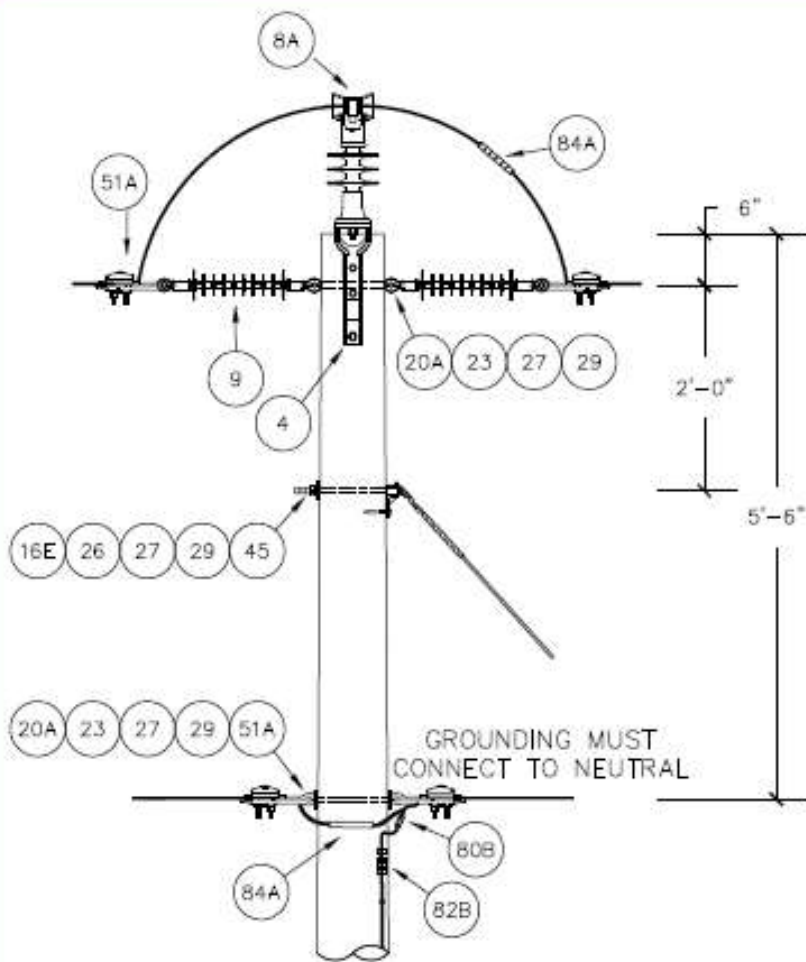
DATE: May 30, 2019

## DISTRIBUTION STANDARDS

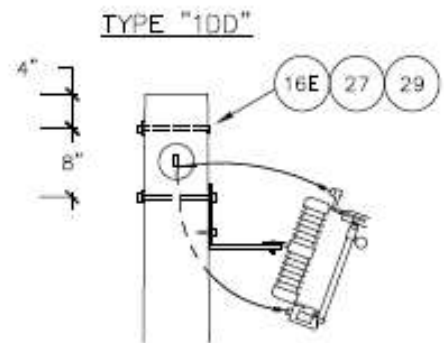
### STRUCTURE "1B2"

STANDARD NO.

8-5



DETAIL OF "1D"



DETAIL OF "1DD"

NOTES:

1. GROUNDING DETAILS PAGE 11-2/4.
2. STRUCTURE TYPE "1D" WILL BE REQUIRED FOR SLACK SPAN REQUIREMENTS. SEE PAGE 9-1 FOR DETAILS.
3. GUYING IS SIMILAR TO "1DE" PG. 8-7 WHEN USED AS A SLACK SPAN TAP STRUCTURE.
4. WHEN USED AS A "1DD" THE NEUTRAL WILL CONTINUE THROUGH ON A SPOOL CLEVIS.
5. CUTOUT BRACKET/SWITCH INSTALLATION DETAILS, PG. 10-15.



DATE: MAY. 2018  
DRAWN: C.CRAIG

REV: E  
DATE: May 5, 2018

APP. BY:  
DATE:

DISTRIBUTION STANDARDS

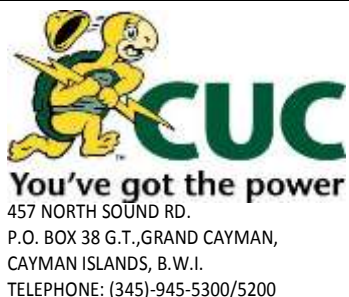
STRUCTURE "1D" & "1DD"

PAGE  
1 of 2

STANDARD NO.  
8-6



ITEM	Quantity				DESCRIPTION	STOCK NO.
	1D		1DD			
	Galv.	SS	Galv.	SS		
4	1				BRACKET - POLE TOP	108-00019
8A	1				KTYPE INSULATOR, Galv Base	457-00012
8B		1			INSULATOR - KTYPE, AL BASE	457-00004
9	2	2	2	2	INSULATOR - SUSPENSION, POLYMER, 25KV	457-00007
13			1	1	INSULATOR - SPOOL, CLASS 53-2	457-00008
14			1		CLEVIS - SECONDARY DEADEND, 3 1/2" X 4"	185-00002
16E	2		3		BOLT - MACH, 5/8" X 12", Galv.	098-00015
16F	1				BOLT - MACH, 5/8" X 14", Galv.	098-00016
20A	2		1		BOLT - OVAL EYE, 5/8" X 12", Galv.	098-00021
23	2		1		NUT - OVAL EYE, 5/8", Galv.	565-00002
26	1		1		SCREW - LAG, TWIST DRIVE/DRIVE POINT, 1/2" X 4"	744-00002
27	7		6		WASHER - SQUARE, 2 1/4", 11/16" HOLE	973-00005
29	5		4		WASHER - LOCK, DOUBLE COIL, 5/8"	973-00011
45	1				HOOK - GUY, DUCTILE IRON, 5/8", HDG	437-00001
51A	4	4	2	2	CLAMP - ST. LINE DEADEND, ALUM, 2-2/0	183-00002
54			1	1	CUTOUT - DISTRIBUTION LOADBREAK POLYMER	264-00003
60			1		BRACKET - CUTOUT, POLE MT, 8"	108-00009
73A			2	2	TERMINAL - COMPRESSION PIN, ALUM, 2/0	783-00001
80B	1	1	1	1	CRIMPIT - CABLELOK, ALUM, 2/0-2	253-00008
82B			1	1	SLEEVE - SERVICE ENTRANCE, 2-6 (RED-BLUE)	785-00004
84A	2	2			SLEEVE - JUMPER, ALUM, 2/0	783-00007
127B	1				STUD, 3/4" LINE POST INSULATOR, SHORT SHANK	840-00002
135E		2		3	BOLT - MACHINE, 5/8" X 12", SS	098-00039
135F		1			BOLT - MACHINE, 5/8" X 14", SS	098-00040
136F		1			BOLT - MACHINE, 3/4" X 3 1/2", SS, FULL THREAD	New Item
137B		2		1	BOLT - OVAL EYE, 5/8" X 12", SS	098-00047
140		2		1	NUT - EYE, 5/8", SS	565-00008
148		1		1	SCREW - LAG, TWIST DRIVE/DRIVE POINT, 1/2" X 4", SS	New Item
153		7		6	WASHER - FLAT SQ., 2 1/4", 11/16" HOLE, SS	973-00009
158		5		4	WASHER - LOCK, 5/8", SINGLE COIL, SS	973-00010
159		1			WASHER - LOCK, 3/4", SINGLE COIL, SS	973-00017
163		1			HOOK - GUY, 5/8", STAINLESS STEEL	437-00002
164				1	CLEVIS - SECONDARY, STAINLESS	185-00007
165		1			BRACKET - POLE TOP, SS	New Item
167				1	BRACKET, CUTOUT/ ARRESTER	108-00016



DATE: MAY. 2018

DRAWN: C. CRAIG

REV.: F

DATE: May 30, 2019

APPROVED BY: C. Rose

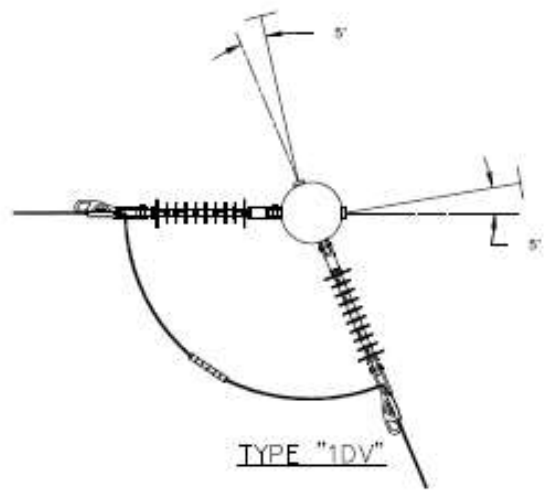
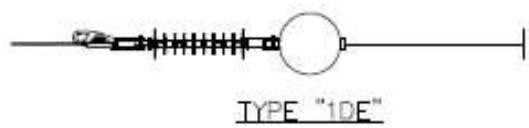
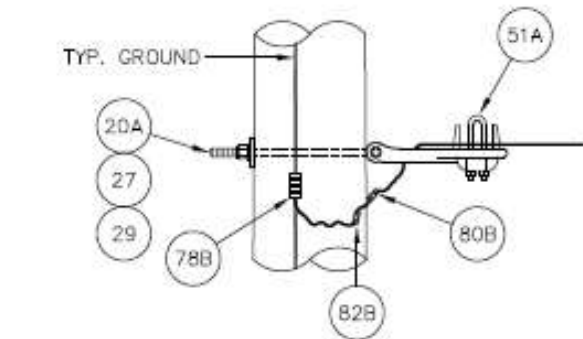
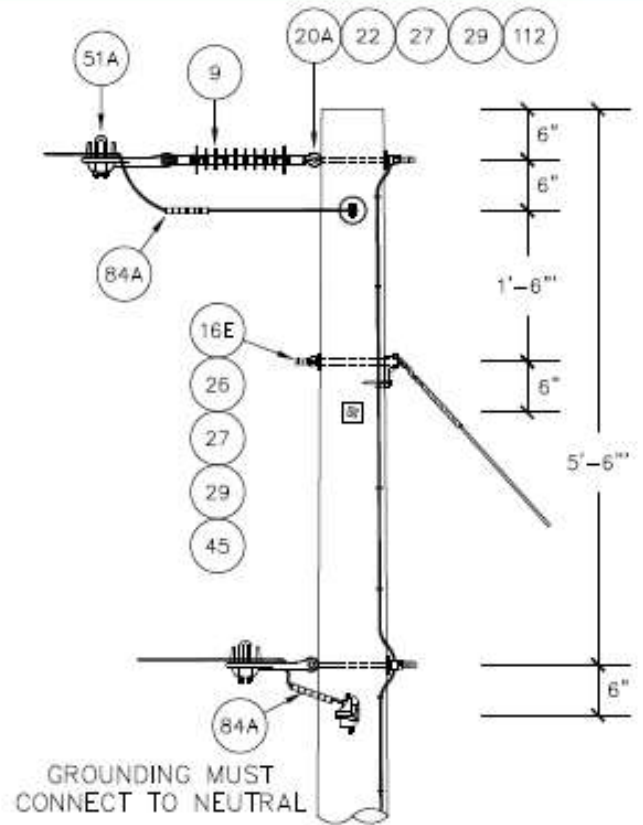
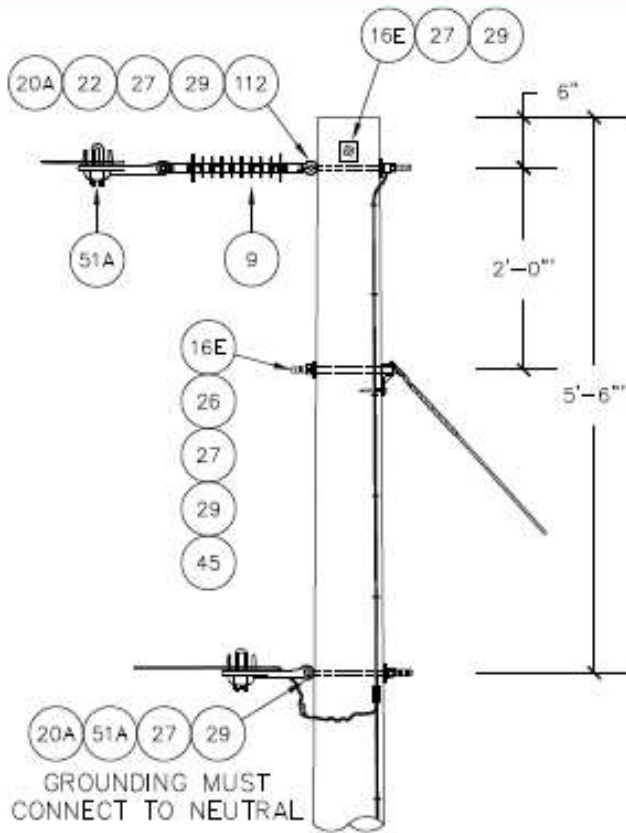
DATE: May 30, 2019

## DISTRIBUTION STANDARDS

### STRUCTURE "1D" & "1DD"

**STANDARD NO.**

**8-6**



**NOTES:**

1. FRAMING DETAILS, PAGE 8-3.
2. GROUNDING DETAILS PAGE 11-2/4.
3. ONE GUY IS SUFFICIENT, HOWEVER SECOND GUY IS NECESSARY WITH SECONDARY, SEE PAGES 6-8 AND 6-9.
4. SECURE TAIL END OF LOOP WITH ALUMINUM WIRE, LOOP SHOULDER JUST SUFFICIENT TO EXTEND LINE AS "10V" OR "1D" IN FUTURE.



DATE: FEB. 2018
DRAWN: C.CRAIG
REV: B
DATE: February 3, 2018
APP. BY:
DATE:

<b>DISTRIBUTION STANDARDS</b>	
<b>STRUCTURE "1DE &amp; 1DV"</b>	
PAGE 1 of 2	STANDARD NO. 8-7

ITEM	Quantity				DESCRIPTION	STOCK NO.
	1DE		1DV			
	Galv.	SS	Galv.	SS		
9	1	1	2	2	INSULATOR - SUSPENSION, POLYMER, 25KV	457-00007
16E	2		2		BOLT - MACH, 5/8" X 12", Galv.	098-00015
20A	2		4		BOLT - OVAL EYE, 5/8" X 12", Galv.	098-00021
22	1		4		NUT - SQUARE, 5/8", Galv.	565-00005
26	1		2		SCREW - LAG, TWIST DRIVE/DRIVE POINT, 1/2" X 4"	744-00002
27	7		10		WASHER - SQUARE, 2 1/4", 11/16" HOLE	973-00005
29	4		6		WASHER - LOCK, DOUBLE COIL, 5/8"	973-00011
45	1		2		HOOK - GUY, DUCTILE IRON, 5/8", HDG	437-00001
51A	2	2	4	4	CLAMP - ST. LINE DEADEND, ALUM, 2-2/0	183-00002
78B	1	1	2	2	CRIMPIT - CTYPE, COPPER, 2-6	253-00004
80B	1	1			CRIMPIT - CABLELOK, ALUM, 2/0-2	253-00008
82B	1	1			SLEEVE - SERVICE ENTRANCE, 2-6 (RED-BLUE)	785-00004
84A			2	2	SLEEVE - JUMPER, ALUM, 2/0	783-00007
112	1		4		CLIP-GROUND WIRE BONDING, 5/8"	188-00002
135E		2		2	BOLT - MACHINE, 5/8" X 12", SS	098-00039
137B		2		4	BOLT - OVAL EYE, 5/8"X12", SS	098-00047
143		1		4	NUT - SQUARE, 5/8", SS	565-00009
148		1		2	SCREW - LAG, TWIST DRIVE/DRIVE POINT, 1/2" X 4", SS	New Item
153		7		10	WASHER - FLAT SQ., 2 1/4", 11/16" HOLE, SS	973-00009
158		4		6	WASHER - LOCK, 5/8", SINGLE COIL, SS	973-00010
162		1		4	CLIP-GROUND WIRE BONDING, 5/8", SS	188-00004
163		1		2	HOOK - GUY, 5/8", STAINLESS STEEL	437-00002



DATE: FEB. 2018

DRAWN: C. CRAIG

REV.: C

DATE: May 31, 2019

APPROVED BY: C. Rose

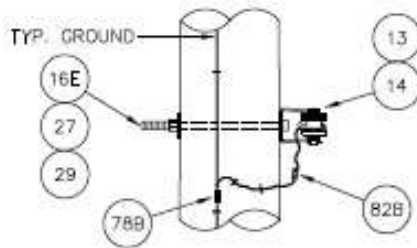
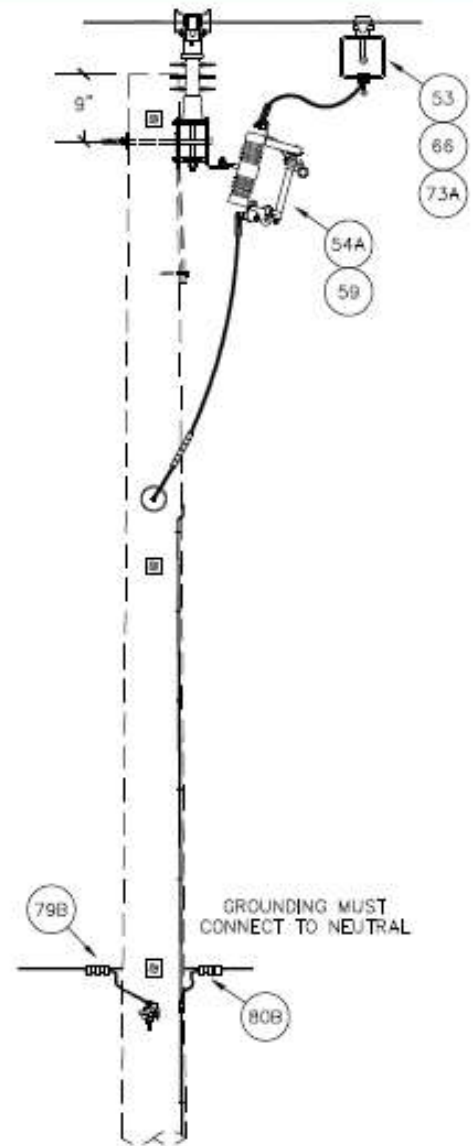
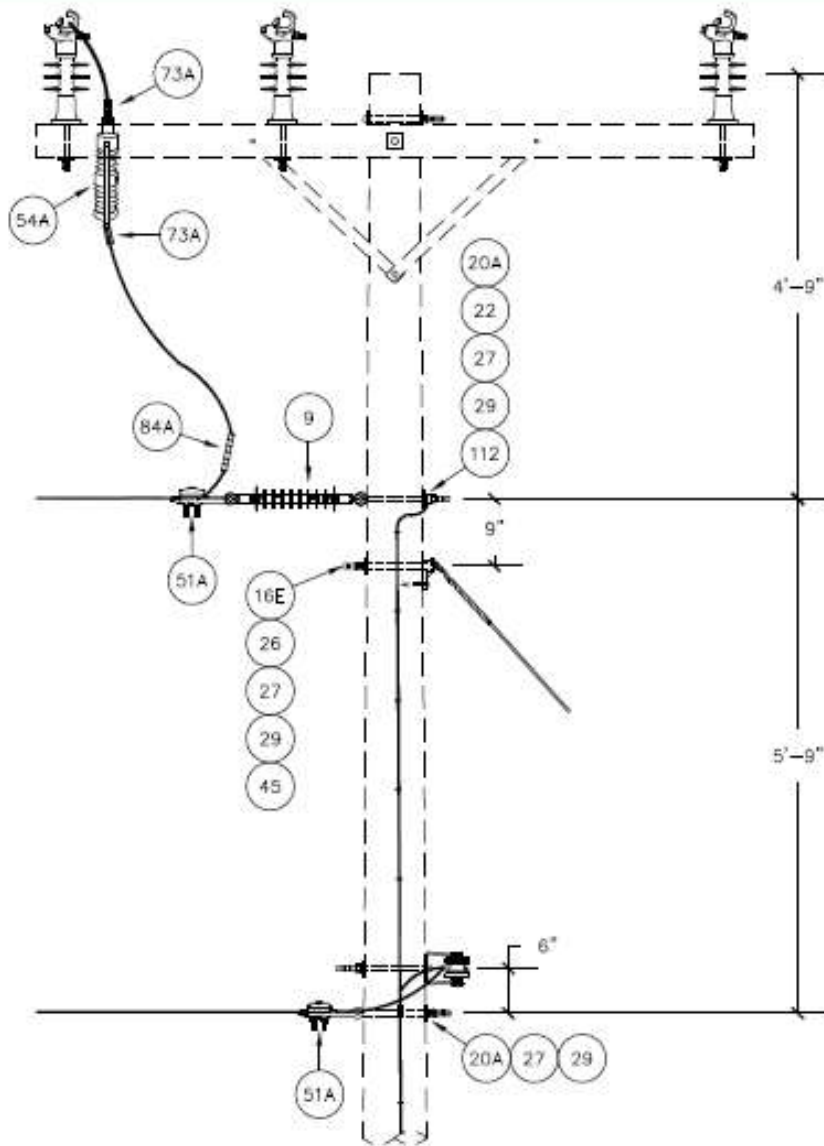
DATE: May 31, 2019

## DISTRIBUTION STANDARDS

### STRUCTURE "1DE" & "1DV"

**STANDARD NO.**

**8-7**



**NOTES:**

1. FRAMING DETAILS, PAGE 8-10.
2. GROUNDING DETAILS PAGE 11-2/4.
3. STRUCTURE TYPE "1TD" SINGLE PHASE TAP WITH DISCONNECT FOR SHORT SPAN CONSTRUCTION.
4. MATERIAL LIST SPECIFIES FUSED CUTOUT, HOWEVER SOLID BLADE DISCONNECTS CAN ALSO BE USED IF REQUIRED. LOCATIONS TO BE SPECIFIED.



DATE: APR. 2018  
DRAWN: C.CRAIG

REV:  
DATE:

APP. BY:  
DATE:

**DISTRIBUTION STANDARDS**

**STRUCTURE "1TD"**

PAGE  
1 of 2

STANDARD NO.  
8-8

ITEM	QUANTITY		DESCRIPTION	STOCK NO.
	Galv.	SS		
9	1	1	INSULATOR - SUSPENSION, POLYMER, 25KV	457-00007
16E	1		BOLT - MACH, 5/8" X 12", Galv.	098-00015
20A	2		BOLT - OVAL EYE, 5/8" X 12", Galv.	098-00021
22	1		NUT - SQUARE, 5/8", Galv.	565-00005
26	1		SCREW - LAG, TWIST DRIVE/DRIVE POINT, 1/2" X 4"	744-00002
27	5		WASHER - SQUARE, 2 1/4", 11/16" HOLE	973-00005
29	3		WASHER - LOCK, DOUBLE COIL, 5/8"	973-00011
45	1		HOOK - GUY, DUCTILE IRON, 5/8", HDG	437-00001
51A	2	2	CLAMP - ST. LINE DEADEND, ALUM, 2-2/0	183-00002
53	1	1	CLAMP - TAP BRONZE #8 SOL	183-00006
54	1	1	CUTOUT - DISTRIBUTION LOADBREAK POLYMER	264-00003
66	1	1	CLAMP - BAIL, 1/0 - 477	183-00001
73A	3	3	TERMINAL - COMPRESSION PIN, ALUM, 2/0	783-00001
78B	1	1	CRIMPIT - CTYPE, COPPER, 2-6	253-00004
79B	1	1	CRIMPIT - CTYPE, ALUM, 2/0	253-00002
84A	1	1	SLEEVE - JUMPER, ALUM, 2/0	783-00007
112	1		CLIP-GROUND WIRE BONDING, 5/8"	188-00002
135E		1	BOLT - MACHINE, 5/8" X 12", SS	098-00039
137B		2	BOLT - OVAL EYE, 5/8"X12", SS	098-00047
143		1	NUT - SQUARE, 5/8", SS	565-00009
153		5	WASHER - FLAT SQ., 2 1/4", 11/16" HOLE, SS	973-00009
158		3	WASHER - LOCK, 5/8", SINGLE COIL, SS	973-00010
162		1	CLIP-GROUND WIRE BONDING, 5/8", SS	188-00004
163		1	HOOK - GUY, 5/8", STAINLESS STEEL	437-00002



DATE: APR. 2018

DRAWN: C. CRAIG

REV.: A

DATE: May 31, 2019

APPROVED BY: C. Rose

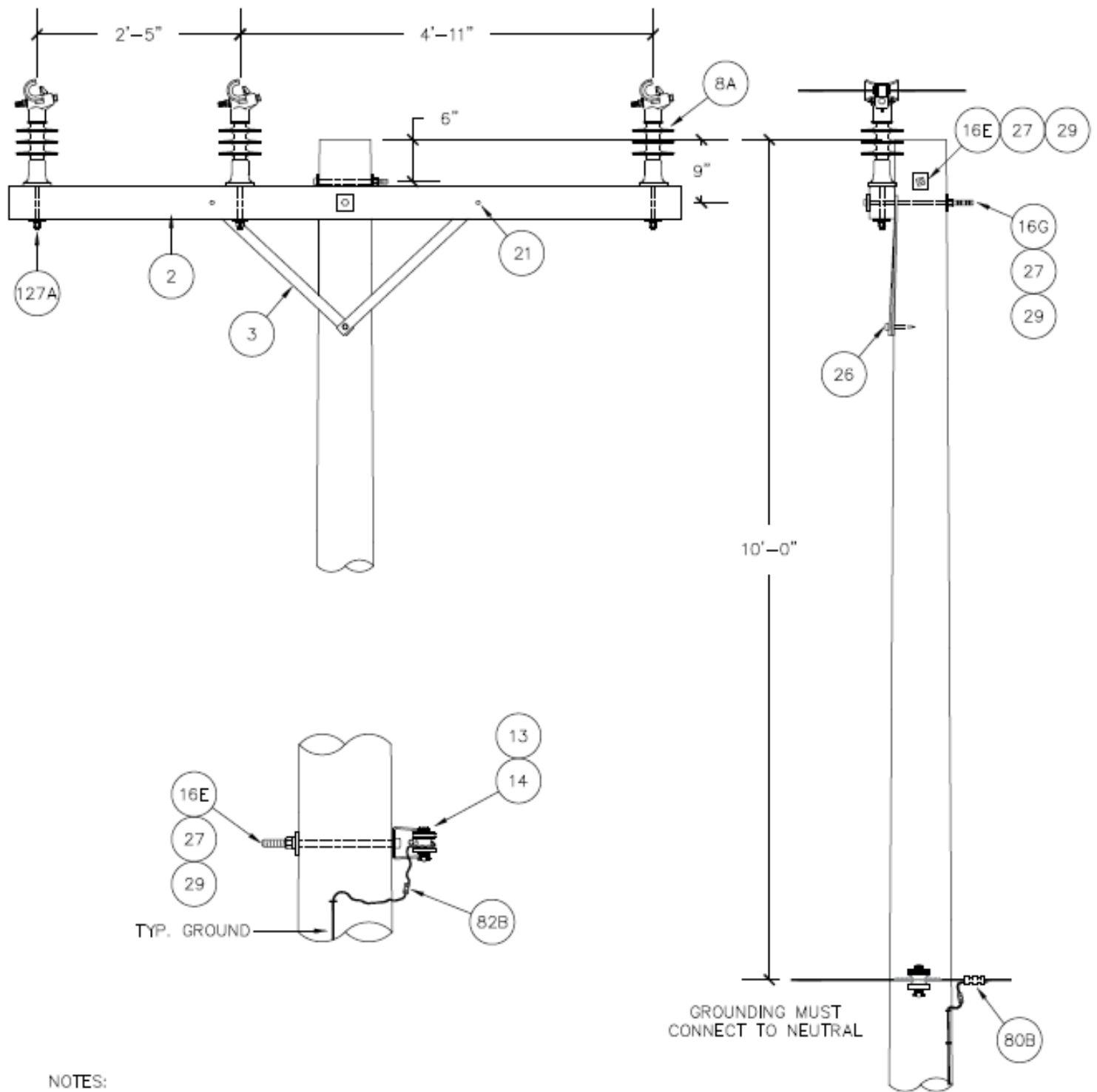
DATE: May 31, 2019

## DISTRIBUTION STANDARDS

### STRUCTURE "1TD"

**STANDARD NO.**

**8-8**



**NOTES:**

1. GROUNDING DETAILS, PG. 11-2/4.
2. LINE ANGLE LIMITATION, PG. 8-2.
3. 3A TO BE USED IN MAINLINE CONSTRUCTION.
4. 3A-SS TO BE USED IN MAINLINE CONSTRUCTION IN COASTAL AREAS AS SPECIFIED.



DATE: FEB. 2018
DRAWN: C.CRAIG
REV: E
DATE: February 10, 2018
APP. BY:
DATE:

<b>DISTRIBUTION STANDARDS</b>	
<b>STRUCTURE "3A"</b>	
PAGE 1 of 2	STANDARD NO. 8-10

ITEM	Quantity		DESCRIPTION	STOCK NO.
	Galv.	SS		
2	1	1	CROSSARM - WOOD, TREATED, 3 5/8" X 4 5/8" X 8'0"	255-00001
3	1	1	BRACE - FLAT, FIBERGLASS, 28"	107-00001
8A	3		KTYPE INSULATOR, Galv Base	457-00012
8B		3	INSULATOR - KTYPE, AL BASE	457-00004
13	1	1	INSULATOR - SPOOL, CLASS 53-2	457-00008
14	1		CLEVIS - SECONDARY DEADEND, 3 1/2" X 4"	185-00002
16E	2		BOLT - MACH, 5/8" X 12", Galv.	098-00015
16G	1		BOLT - MACH, 5/8" X 16", Galv.	098-00017
21	2		BOLT - CARRIAGE, 3/8" X 5", Galv.	098-00002
26	1		SCREW - LAG, TWIST DRIVE/DRIVE POINT, 1/2" X 4"	744-00002
27	5		WASHER - SQUARE, 2 1/4", 11/16" HOLE	973-00005
29	3		WASHER - LOCK, DOUBLE COIL, 5/8"	973-00011
80B	1	1	CRIMPIT - CABLELOK, ALUM, 2/0-2	253-00008
82B	1	1	SLEEVE - SERVICE ENTRANCE, 2-6 (RED-BLUE)	785-00004
127A	3		STUD, 3/4" LINE POST INSULATOR, 5/8", LONG SHANK	840-00004
130		2	BOLT - CARRIAGE 3/8" X 5-1/2", SS	098-00035
135E		2	BOLT - MACHINE, 5/8" X 12", SS	098-00039
135G		1	BOLT - MACHINE, 5/8" X 16", SS	098-00041
148		1	SCREW - LAG, TWIST DRIVE/DRIVE POINT, 1/2" X 4", SS	New Item
153		5	WASHER - FLAT SQ., 2 1/4", 11/16" HOLE, SS	973-00009
158		3	WASHER - LOCK, 5/8", SINGLE COIL, SS	973-00010
164		1	CLEVIS - SECONDARY, STAINLESS	185-00007
166B		3	STUD, 3/4" LINE POST Al. BASE INSULATOR, 5/8" DIA, SS	840-00005



DATE: FEB. 2018

DRAWN: C. CRAIG

REV.: F

DATE: June 6, 2019

APPROVED BY: C. Rose

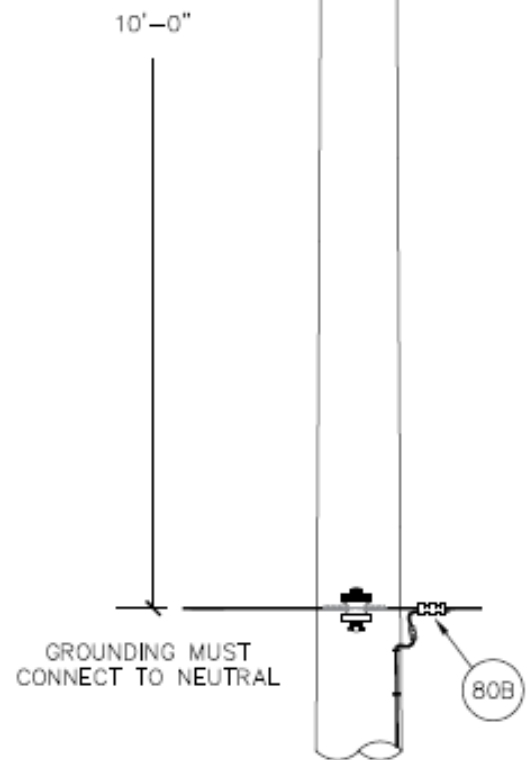
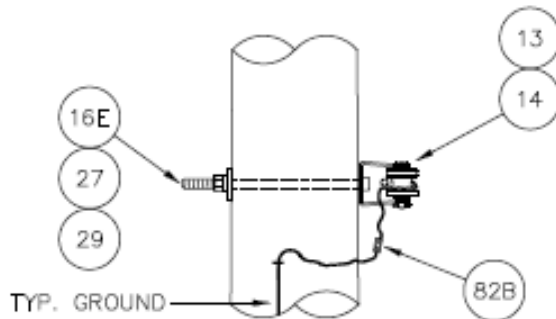
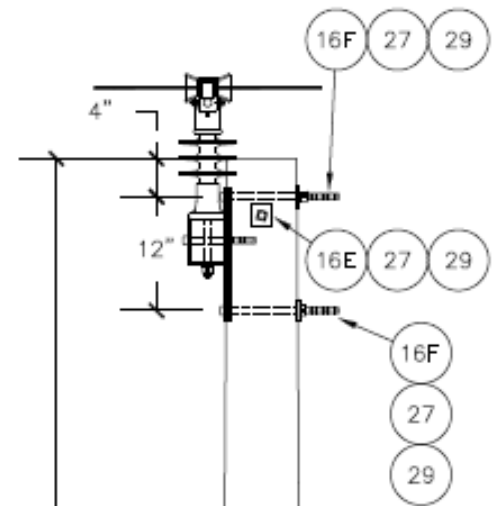
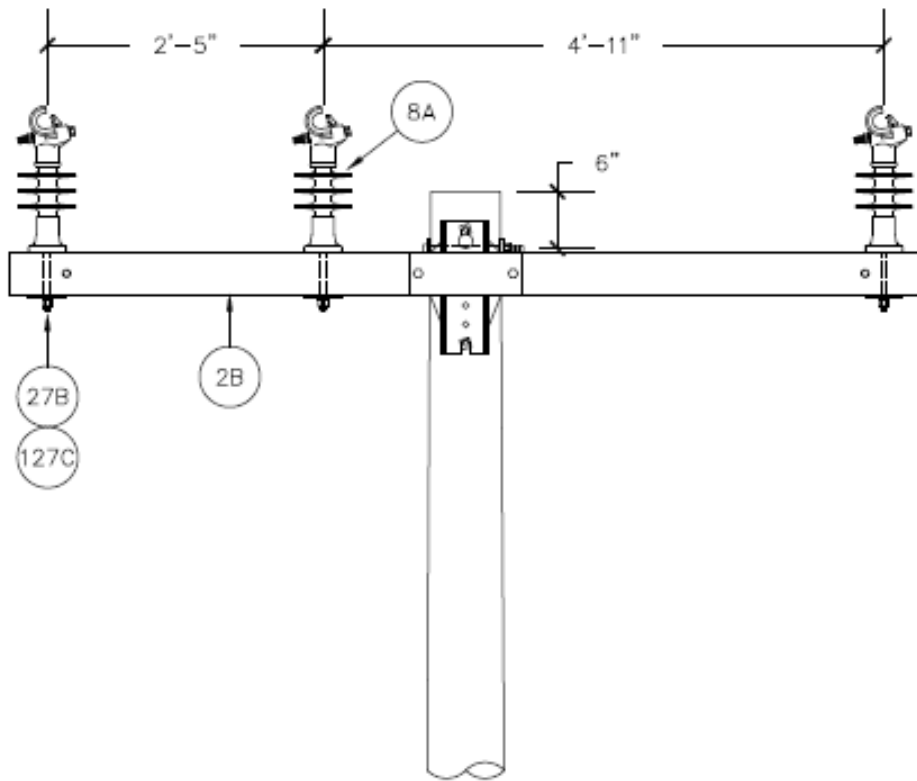
DATE: June 6, 2019

## DISTRIBUTION STANDARDS

### STRUCTURE "3A"

**STANDARD NO.**

**8-10**



**NOTES:**

1. GROUNDING DETAILS, PG. 11-2/4.
2. LINE ANGLE LIMITATION, PG. 8-2.
3. 3AF TO BE USED IN MAINLINE CONSTRUCTION.
4. 3AF-SS TO BE USED IN MAINLINE CONSTRUCTION IN COASTAL AREAS AS SPECIFIED.



DATE: FEB. 2018  
 DRAWN: C.CRAIG  
 REV: B  
 DATE: February 12, 2018  
 APP. BY:  
 DATE:

**DISTRIBUTION STANDARDS**

**STRUCTURE "3AF"**

PAGE  
1 of 2

STANDARD NO.  
8-11



ITEM	Quantity		DESCRIPTION	STOCK NO.
	Galv.	SS		
2B	1	1	FIBERGLASS CROSSARM - 8' TANGENT	255-00006
8A	3		KTYPE INSULATOR, Galv Base	457-00012
8B		3	INSULATOR - KTYPE, AL BASE	457-00004
13	1	1	INSULATOR - SPOOL, CLASS 53-2	457-00008
14	1		CLEVIS - SECONDARY DEADEND, 3 1/2" X 4"	185-00002
16E	2		BOLT - MACH, 5/8" X 12", Galv.	098-00015
16F	2		BOLT - MACH, 5/8" X 14", Galv.	098-00016
27	5		WASHER - SQUARE, 2 1/4", 11/16" HOLE	973-00005
27B	3		WASHER - SQUARE, 4", 13/16" HOLE	973-00004
29	4		WASHER - LOCK, DOUBLE COIL, 5/8"	973-00011
80B	1	1	CRIMPIT - CABLELOK, ALUM, 2/0-2	253-00008
82B	1	1	SLEEVE - SERVICE ENTRANCE, 2-6 (RED-BLUE)	785-00004
127C	3		STUD, 3/4" LINE POST INSULATOR, 3/4", LONG SHANK	840-00003
135E		2	BOLT - MACHINE, 5/8" X 12", SS	098-00039
135F		2	BOLT - MACHINE, 5/8" X 14", SS	098-00040
153		5	WASHER - FLAT SQ., 2 1/4", 11/16" HOLE, SS	973-00009
156		3	WASHER - FLAT SQ., 4", 7/8" HOLE, SS	973-00020
158		4	WASHER - LOCK, 5/8", SINGLE COIL, SS	973-00010
164		1	CLEVIS - SECONDARY, STAINLESS	185-00007
166C		3	STUD, 3/4" LINE POST AL. BASE INSULATOR, 3/4" DIA, SS	840-00006



DATE: FEB. 2018

DRAWN: C. CRAIG

REV.: C

DATE: May 31, 2019

APPROVED BY: C. Rose

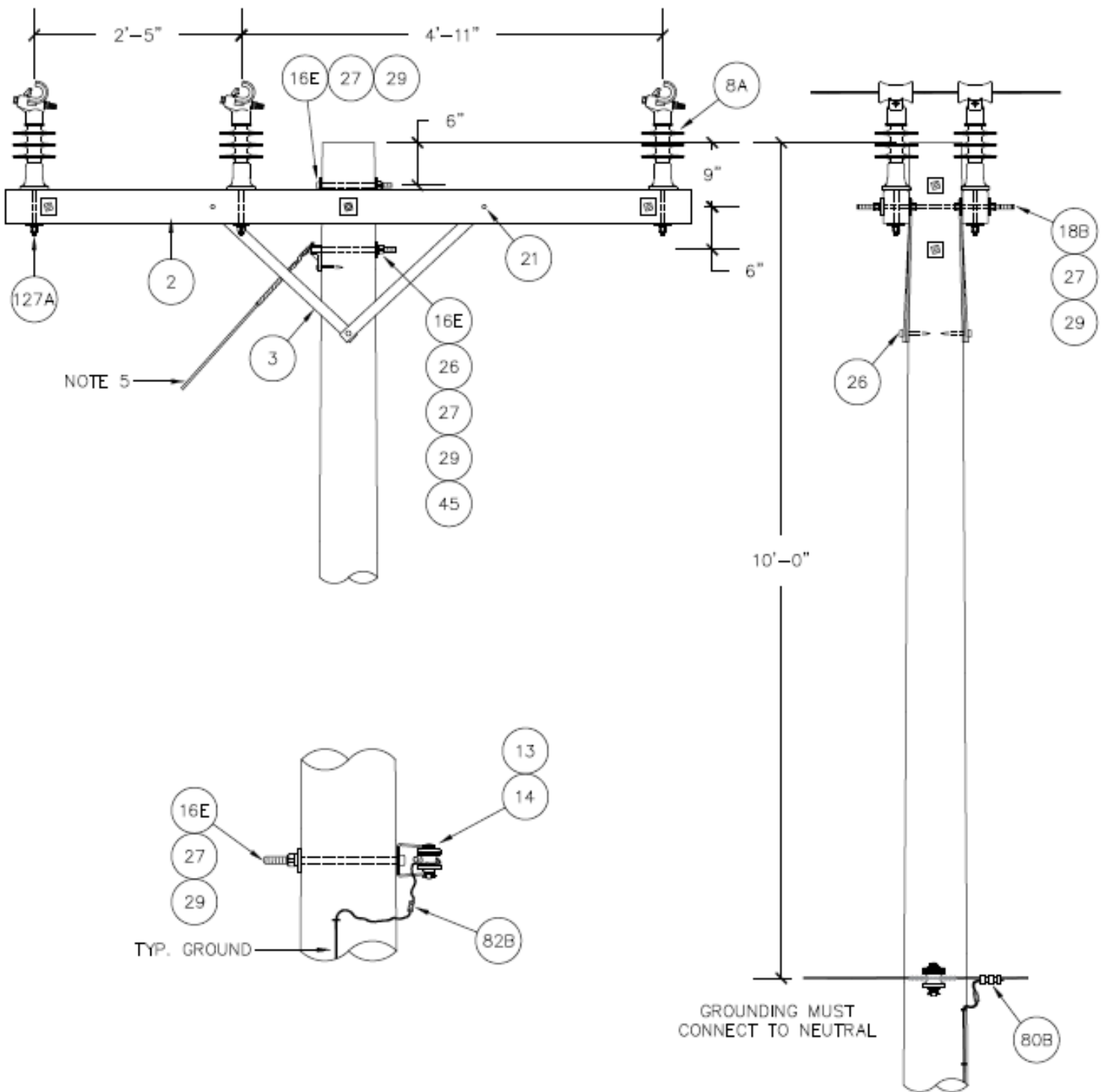
DATE: May 31, 2019

## DISTRIBUTION STANDARDS

### STRUCTURE "3AF"

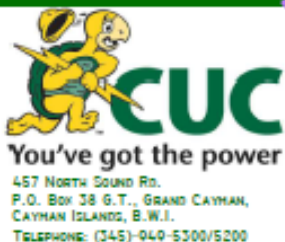
**STANDARD NO.**

**8-11**



NOTES:

1. GROUNDING DETAILS, PG. 11-2/4.
2. LINE ANGLE LIMITATION, PG. 8-2.
3. 3B2 TO BE USED IN MAINLINE CONSTRUCTION.
4. 3B2-SS TO BE USED IN MAINLINE CONSTRUCTION IN COASTAL AREAS AS SPECIFIED.
5. INSTALL A G2 GUY FOR ANGLES GREATER THAN 20° WITH 4/0 AAC AND ANGLES GREATER THAN 10° WITH 477 AAC CONDUCTOR.



DATE: FEB. 2018

DRAWN: C.CRAIG

REV: E

DATE: February 21, 2018

APP. BY:

DATE:

**DISTRIBUTION STANDARDS**

**STRUCTURE "3B2"**

PAGE  
1 of 2

STANDARD NO.  
8-12

ITEM	Quantity		DESCRIPTION	STOCK NO.
	Galv.	SS		
2	2	2	CROSSARM - WOOD, TREATED, 3 5/8" X 4 5/8" X 8'0"	255-00001
3	2	2	BRACE - FLAT, FIBERGLASS, 28"	107-00001
8A	6		KTYPE INSULATOR, Galv Base	457-00012
8B		6	INSULATOR - KTYPE, AL BASE	457-00004
13	1	1	INSULATOR - SPOOL, CLASS 53-2	457-00008
14	1		CLEVIS - SECONDARY DEADEND, 3 1/2" X 4"	185-00002
16E	3		BOLT - MACH, 5/8" X 12", Galv.	098-00015
18B	3		BOLT - DA, 5/8" X 22", Galv.	098-00004
21	4		BOLT - CARRIAGE, 3/8" X 5", Galv.	098-00002
26	3		SCREW - LAG, TWIST DRIVE/DRIVE POINT, 1/2" X 4"	744-00002
27	14		WASHER - SQUARE, 2 1/4", 11/16" HOLE	973-00005
29	13		WASHER - LOCK, DOUBLE COIL, 5/8"	973-00011
45	1		HOOK - GUY, DUCTILE IRON, 5/8", HDG	437-00001
80B	1	1	CRIMPIT - CABLELOK, ALUM, 2/0-2	253-00008
82B	1	1	SLEEVE - SERVICE ENTRANCE, 2-6 (RED-BLUE)	785-00004
127A	6		STUD, 3/4" LINE POST INSULATOR, 5/8", LONG SHANK	840-00004
130		4	BOLT - CARRIAGE 3/8" X 5-1/2", SS	098-00035
131B		3	BOLT - D/A 5/8" X 22", SS	098-00044
135E		3	BOLT - MACHINE, 5/8" X 12", SS	098-00039
148		3	SCREW - LAG, TWIST DRIVE/DRIVE POINT, 1/2" X 4", SS	New Item
153		14	WASHER - FLAT SQ., 2 1/4", 11/16" HOLE, SS	973-00009
158		13	WASHER - LOCK, 5/8", SINGLE COIL, SS	973-00010
163		1	HOOK - GUY, 5/8", STAINLESS STEEL	437-00002
164		1	CLEVIS - SECONDARY, STAINLESS	185-00007
166B		6	STUD, 3/4" LINE POST AL. BASE INSULATOR, 5/8" DIA, SS	840-00005



DATE: FEB. 2018

DRAWN: C. CRAIG

REV.: F

DATE: May 31, 2019

APPROVED BY: C. Rose

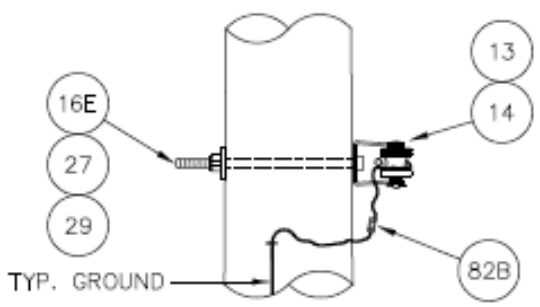
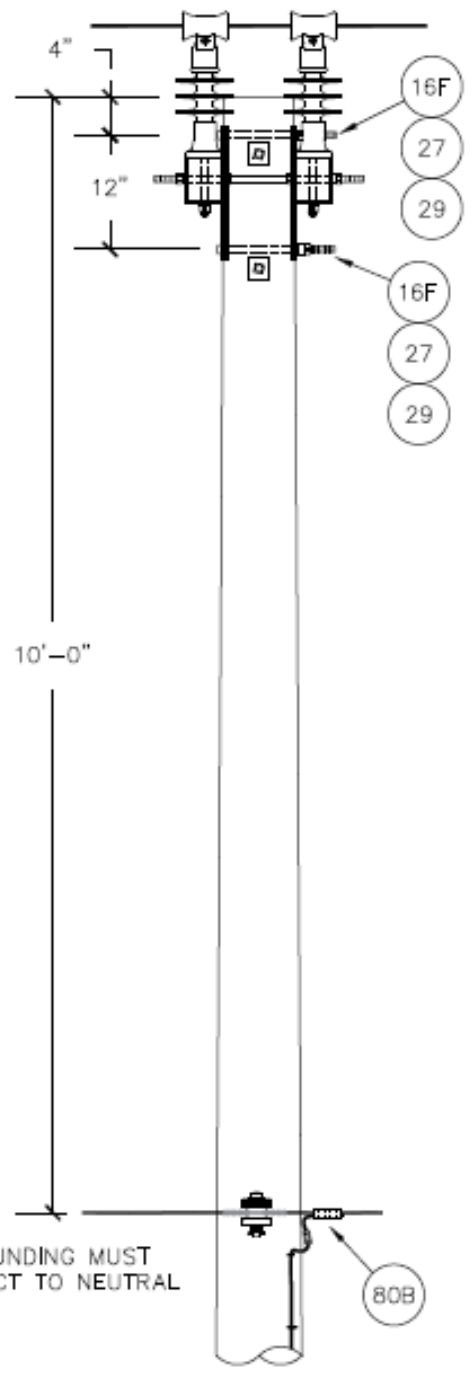
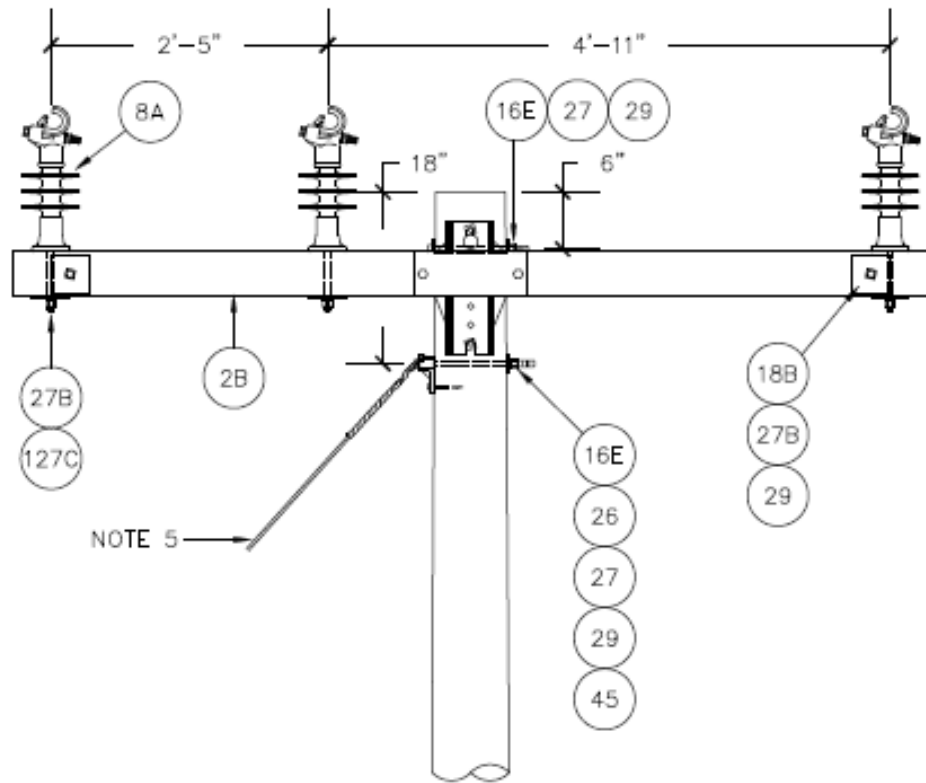
DATE: May 31, 2019

## DISTRIBUTION STANDARDS

### STRUCTURE "3B2"

**STANDARD NO.**

**8-12**



**NOTES:**

1. GROUNDING DETAILS, PG. 11-2/4.
2. LINE ANGLE LIMITATION, PG. 8-2.
3. 3B2 TO BE USED IN MAINLINE CONSTRUCTION.
4. 3B2-SS TO BE USED IN MAINLINE CONSTRUCTION IN COASTAL AREAS AS SPECIFIED.
5. INSTALL A G2 GUY FOR ANGLES GREATER THAN 20° WITH 4/0 AAC AND ANGLES GREATER THAN 10° WITH 477 AAC CONDUCTOR.



DATE: FEB. 2018
DRAWN: C.CRAIG
REV: A
DATE: February 21, 2018
APP. BY:
DATE:

<b>DISTRIBUTION STANDARDS</b>	
<b>STRUCTURE "3B2F"</b>	
PAGE 1 of 2	STANDARD NO. 8-13

ITEM	Quantity		DESCRIPTION	STOCK NO.
	Galv.	SS		
2B	2	2	FIBERGLASS CROSSARM - 8' TANGENT	255-00006
8A	6		KTYPE INSULATOR, Galv Base	457-00012
8B		6	INSULATOR - KTYPE, AL BASE	457-00004
13	1	1	INSULATOR - SPOOL, CLASS 53-2	457-00008
14	1		CLEVIS - SECONDARY DEADEND, 3 1/2" X 4"	185-00002
16E	3		BOLT - MACH, 5/8" X 12", Galv.	098-00015
16F	2		BOLT - MACH, 5/8" X 14", Galv.	098-00016
18B	2		BOLT - DA, 5/8" X 22", Galv.	098-00004
26	1		SCREW - LAG, TWIST DRIVE/DRIVE POINT, 1/2" X 4"	744-00002
27	6		WASHER - SQUARE, 2 1/4", 11/16" HOLE	973-00005
27B	14		WASHER - SQUARE, 4", 13/16" HOLE	973-00004
29	13		WASHER - LOCK, DOUBLE COIL, 5/8"	973-00011
45	1		HOOK - GUY, DUCTILE IRON, 5/8", HDG	437-00001
80B	1	1	CRIMPIT - CABLELOK, ALUM, 2/0-2	253-00008
82B	1	1	SLEEVE - SERVICE ENTRANCE, 2-6 (RED-BLUE)	785-00004
127C	6		STUD, 3/4" LINE POST INSULATOR, 3/4", LONG SHANK	840-00003
131B		2	BOLT - D/A 5/8" X 22", SS	098-00044
135E		3	BOLT - MACHINE, 5/8" X 12", SS	098-00039
135F		2	BOLT - MACHINE, 5/8" X 14", SS	098-00040
153		6	WASHER - FLAT SQ., 2 1/4", 11/16" HOLE, SS	973-00009
156		14	WASHER - FLAT SQ., 4", 7/8" HOLE, SS	973-00020
158		13	WASHER - LOCK, 5/8", SINGLE COIL, SS	973-00010
163		1	HOOK - GUY, 5/8", STAINLESS STEEL	437-00002
164		1	CLEVIS - SECONDARY, STAINLESS	185-00007
166C		6	STUD, 3/4" LINE POST AL. BASE INSULATOR, 3/4" DIA, SS	840-00006



DATE: FEB. 2018

DRAWN: C. CRAIG

REV.: B

DATE: May 31, 2019

APPROVED BY: C. Rose

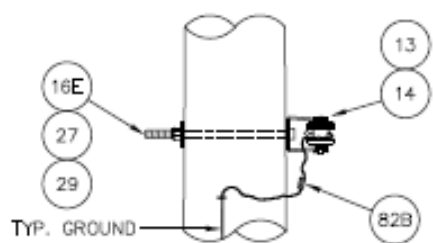
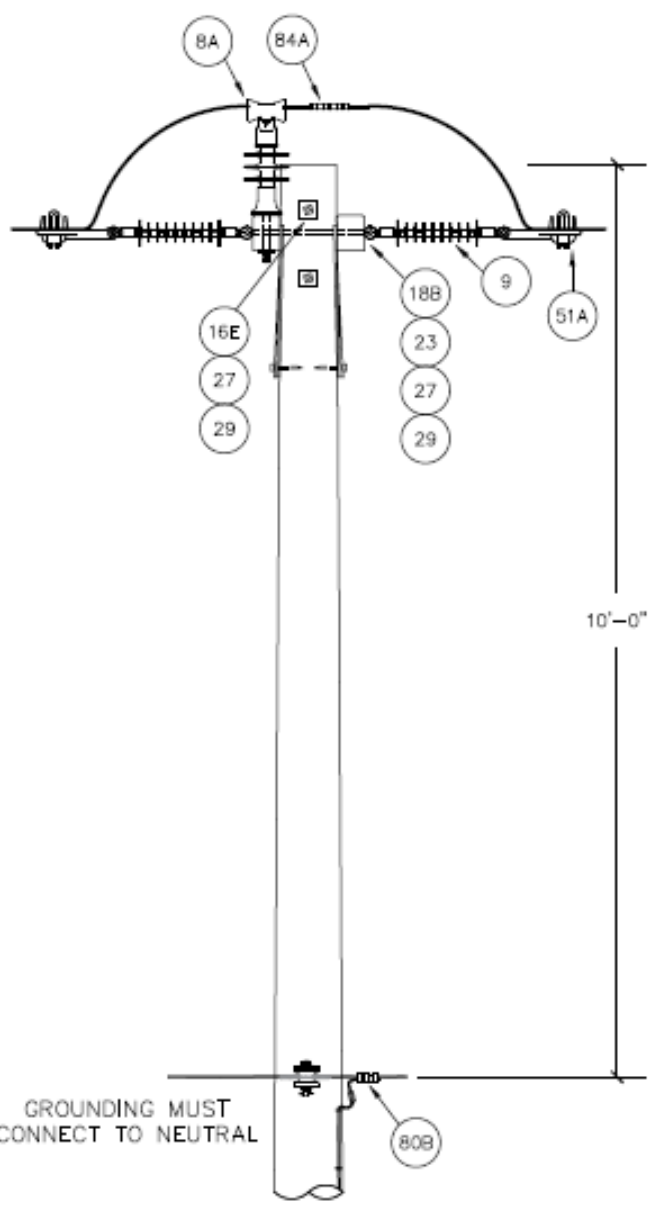
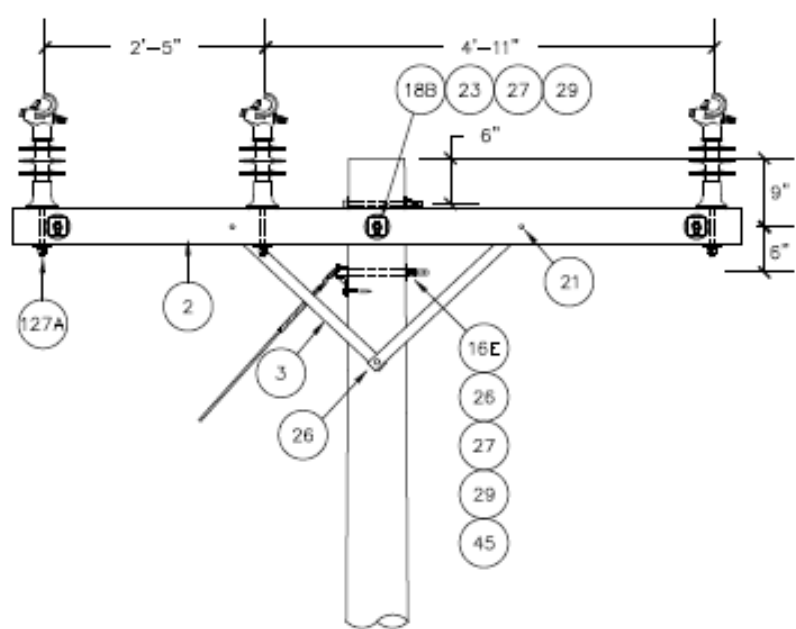
DATE: May 31, 2019

## DISTRIBUTION STANDARDS

STRUCTURE "3B2F"

STANDARD NO.

8-13



**NOTES:**

1. FRAMING DETAILS, PAGE 8-3.
2. GROUNDING DETAILS PAGE 11-2/4.
3. LINE ANGLE LIMITATIONS, PAGE 8-2.
4. WHEN USED WITH DISCONNECTS, SEE PAGE 8-15.



DATE: FEB. 2018
DRAWN: C.CRAIG
REV: B
DATE: February 12, 2018
APP. BY:
DATE:

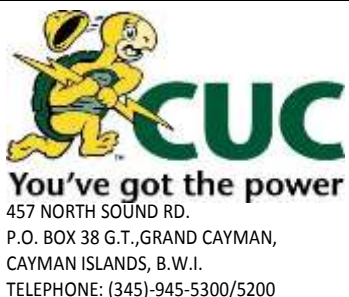
**DISTRIBUTION STANDARDS**

**STRUCTURE "3D"**

PAGE  
1 of 2

STANDARD NO.  
8-14

ITEM	Quantity		DESCRIPTION	STOCK NO.
	Galv.	SS		
2	2	2	CROSSARM - WOOD, TREATED, 3 5/8" X 4 5/8" X 8'0"	255-00001
3	2	2	BRACE - FLAT, FIBERGLASS, 28"	107-00001
8A	3		KTYPE INSULATOR, Galv Base	457-00012
8B		3	INSULATOR - KTYPE, AL BASE	457-00004
9	6	6	INSULATOR - SUSPENSION, POLYMER, 25KV	457-00007
13	1	1	INSULATOR - SPOOL, CLASS 53-2	457-00008
14	1		CLEVIS - SECONDARY DEADEND, 3 1/2" X 4"	185-00002
16E	3		BOLT - MACH, 5/8" X 12", Galv.	098-00015
18B	3		BOLT - DA, 5/8" X 22", Galv.	098-00004
21	4		BOLT - CARRIAGE, 3/8" X 5", Galv.	098-00002
23	6		NUT - OVAL EYE, 5/8", Galv.	565-00002
26	3		SCREW - LAG, TWIST DRIVE/DRIVE POINT, 1/2" X 4"	744-00002
27	14		WASHER - SQUARE, 2 1/4", 11/16" HOLE	973-00005
29	13		WASHER - LOCK, DOUBLE COIL, 5/8"	973-00011
45	1		HOOK - GUY, DUCTILE IRON, 5/8", HDG	437-00001
51A	6	6	CLAMP - ST. LINE DEADEND, ALUM, 2-2/0	183-00002
80B	1	1	CRIMPIT - CABLELOK, ALUM, 2/0-2	253-00008
82B	1	1	SLEEVE - SERVICE ENTRANCE, 2-6 (RED-BLUE)	785-00004
84A	3	3	SLEEVE - JUMPER, ALUM, 2/0	783-00007
127A	3		STUD, 3/4" LINE POST INSULATOR, 5/8", LONG SHANK	840-00004
130		4	BOLT - CARRIAGE 3/8" X 5-1/2", SS	098-00035
131B		3	BOLT - D/A 5/8" X 22", SS	098-00044
135E		3	BOLT - MACHINE, 5/8" X 12", SS	098-00039
140		6	NUT - EYE, 5/8", SS	565-00008
148		2	SCREW - LAG, TWIST DRIVE/DRIVE POINT, 1/2" X 4", SS	New Item
153		14	WASHER - FLAT SQ., 2 1/4", 11/16" HOLE, SS	973-00009
158		13	WASHER - LOCK, 5/8", SINGLE COIL, SS	973-00010
163		1	HOOK - GUY, 5/8", STAINLESS STEEL	437-00002
164		1	CLEVIS - SECONDARY, STAINLESS	185-00007
166B		3	STUD, 3/4" LINE POST AL. BASE INSULATOR, 5/8" DIA, SS	840-00005



DATE: FEB. 2018

DRAWN: C. CRAIG

REV.: C

DATE: May 31, 2019

APPROVED BY: C. Rose

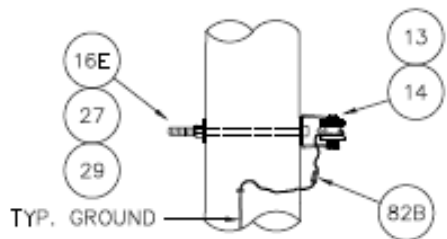
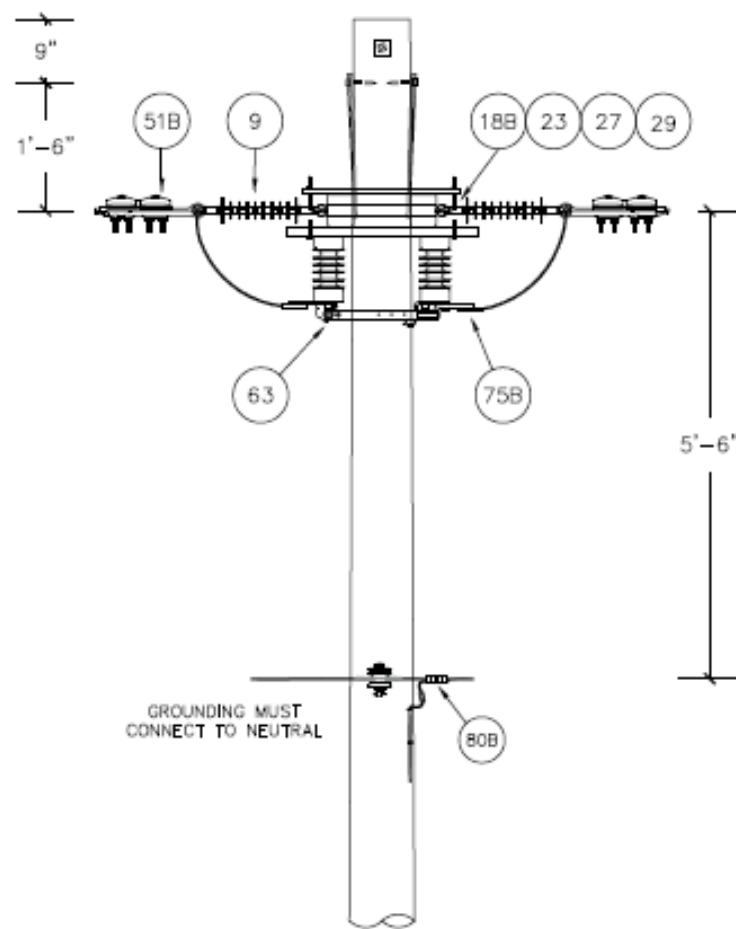
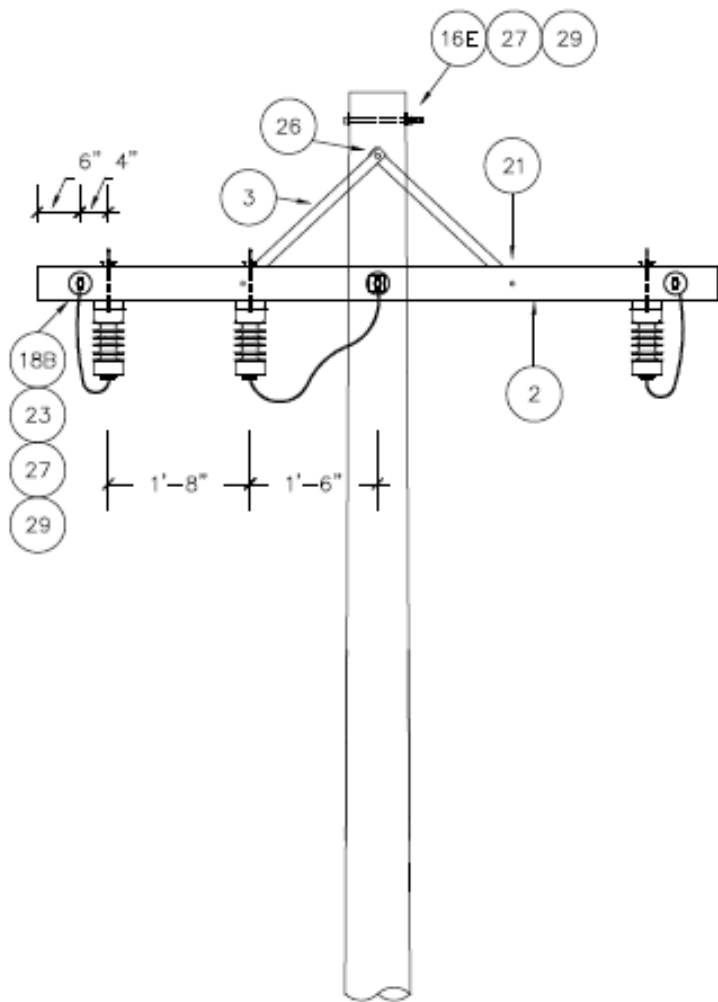
DATE: May 31, 2019

## DISTRIBUTION STANDARDS

STRUCTURE "3D"

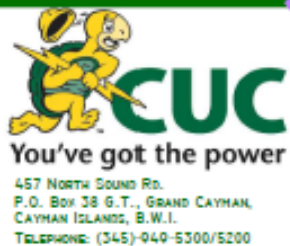
STANDARD NO.

8-14



NOTES:

1. FRAMING DETAILS, PG. 8-3
2. GROUNDING DETAILS, PG. 11-2/4
3. LINE ANGLE LIMITATIONS, PG 8-2



DATE: JUL. 2018  
 DRAWN: J. GREENING  
 REV: B  
 DATE: JULY 24, 2018  
 APP. BY:  
 DATE:

**DISTRIBUTION STANDARDS**

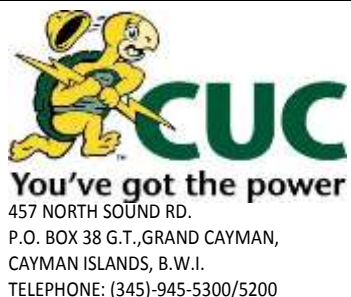
**STRUCTURE "3D-EV"**

PAGE  
1 of 2

STANDARD NO.  
8-15



ITEM	Quantity		DESCRIPTION	STOCK NO.
	Galv.	SS		
2	2	2	CROSSARM - WOOD, TREATED, 3 5/8" X 4 5/8" X 8'0"	255-00001
3	2	2	BRACE - FLAT, FIBERGLASS, 28"	107-00001
9	6	6	INSULATOR - SUSPENSION, POLYMER, 25KV	457-00007
13	1	1	INSULATOR - SPOOL, CLASS 53-2	457-00008
14	1		CLEVIS - SECONDARY DEADEND, 3 1/2" X 4"	185-00002
16E	2		BOLT - MACH, 5/8" X 12", Galv.	098-00015
18B	3		BOLT - DA, 5/8" X 22", Galv.	098-00004
21	4		BOLT - CARRIAGE, 3/8" X 5", Galv.	098-00002
23	6		NUT - OVAL EYE, 5/8", Galv.	565-00002
26	2		SCREW - LAG, TWIST DRIVE/DRIVE POINT, 1/2" X 4"	744-00002
27	13		WASHER - SQUARE, 2 1/4", 11/16" HOLE	973-00005
29	12		WASHER - LOCK, DOUBLE COIL, 5/8"	973-00011
51B	6	6	CLAMP - ST. LINE DEADEND, ALUM, 4/0-477	183-00003
63	3	3	SWITCH - LOADBUSTER DISCONNECT, (EV SWITCH)	850-00001
75B	6	6	TERMINAL - COMPRESSION PAD, ALUM, 477	879-00001
80D	1	1	CRIMPIT - CABLELOK, ALUM, 4/0-2	213-00005
82B	1	1	SLEEVE - SERVICE ENTRANCE, 2-6 (RED-BLUE)	785-00004
130		4	BOLT - CARRIAGE 3/8" X 5-1/2", SS	098-00035
131B		3	BOLT - D/A 5/8" X 22", SS	098-00044
135E		2	BOLT - MACHINE, 5/8" X 12", SS	098-00039
140		6	NUT - EYE, 5/8", SS	565-00008
148		2	SCREW - LAG, TWIST DRIVE/DRIVE POINT, 1/2" X 4", SS	New Item
153		13	WASHER - FLAT SQ., 2 1/4", 11/16" HOLE, SS	973-00009
158		12	WASHER - LOCK, 5/8", SINGLE COIL, SS	973-00010
164		1	CLEVIS - SECONDARY, STAINLESS	185-00007



DATE: JUL. 2018

DRAWN: J. GREENING

REV.: C

DATE: May 31, 2019

APPROVED BY: C. Rose

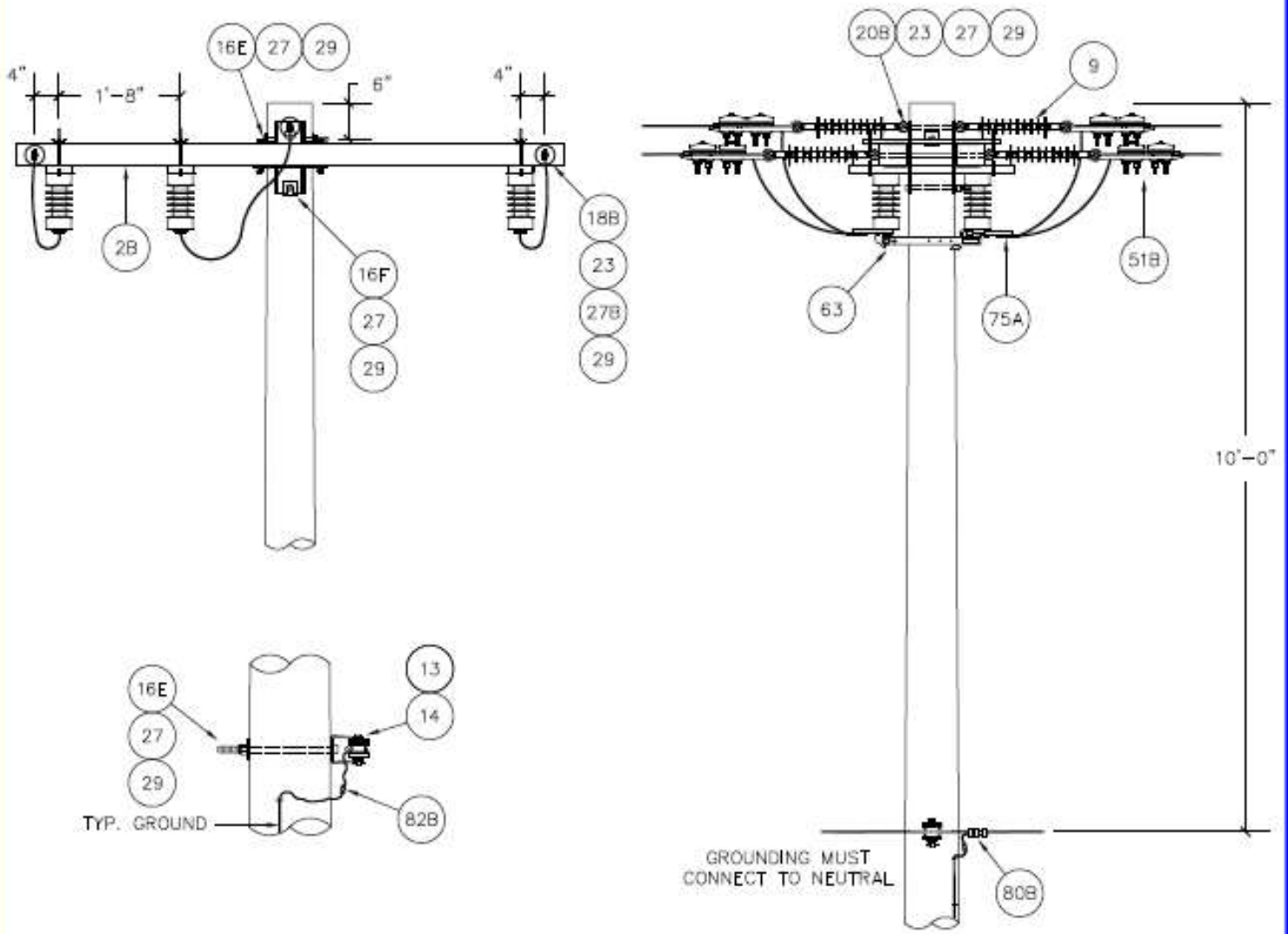
DATE: May 31, 2019

## DISTRIBUTION STANDARDS

### STRUCTURE "3D-EV"

**STANDARD NO.**

**8-15**



**NOTES:**

1. GROUNDING DETAILS, PG. 11-2/4.
2. LINE ANGLE LIMITATION, PG. 8-2.
3. 3B2F TO BE USED IN MAINLINE CONSTRUCTION.
4. 3B2F-SS TO BE USED IN MAINLINE CONSTRUCTION IN COASTAL AREAS AS SPECIFIED.



DATE: JUN 2019	DISTRIBUTION STANDARDS	
DRAWN: C.CRAIG		
REV: D	STRUCTURE "3D-EVF"	
DATE: June 13, 2019		
APP. BY:	PAGE	STANDARD NO.
DATE:	1 of 2	

ITEM	QUANTITY				DESCRIPTION	STOCK NO.
	4/0		477			
	Galv.	SS	Galv.	SS		
2B	2	2	2	2	FIBERGLASS CROSSARM - 8' TANGENT	255-00006
9	6	6	6	6	INSULATOR - SUSPENSION, POLYMER, 25KV	457-00007
13	1	1	1	1	INSULATOR - SPOOL, CLASS 53-2	457-00008
14	1		1		CLEVIS - SECONDARY DEADEND, 3 1/2"X 4"	185-00002
16E	2		2		BOLT - MACH, 5/8" X 12", Galv.	098-00015
16F	1		1		BOLT - MACH, 5/8" X 14", Galv.	098-00016
18B	2		2		BOLT - DA, 5/8" X 22", Galv.	098-00004
20B	1		1		BOLT - OVAL EYE, 5/8" X 14", Galv.	098-00051
23	5		5		NUT - OVAL EYE, 5/8", Galv.	565-00002
27	6		6		WASHER - SQUARE, 2 1/4", 11/16" HOLE	973-00005
27B	8		8		WASHER - SQUARE, 4", 13/16" HOLE	973-00004
29	12		12		WASHER - LOCK, DOUBLE COIL, 5/8"	973-00011
51B	6	6	6	6	CLAMP - ST. LINE DEADEND, ALUM, 4/0-477	183-00003
63	3	3	3	3	SWITCH - LOADBUSTER DISCONNECT, (EV SWITCH)	850-00001
75A	6	6			TERMINAL - DISCONNECTABLE, ALUM, 4/0	879-00002
75B			6	6	TERMINAL - DISCONNECTABLE, ALUM, 477	879-00001
80B	1	1			CRIMPIT - CABLELOK, ALUM, 2/0-2	253-00008
80D			1	1	CRIMPIT - CABLELOK, ALUM, 4/0-2	213-00005
82B	1	1	1	1	SLEEVE - SERVICE ENTRANCE, 2-6 (RED-BLUE)	785-00004
131B		2		2	BOLT - D/A 5/8" X 22", SS	098-00044
135E		2		2	BOLT - MACHINE, 5/8" X 12", SS	098-00039
135F		1		1	BOLT - MACHINE, 5/8" X 14", SS	098-00040
137C		1		1	BOLT - OVAL EYE, 5/8"X14", SS	New Item
140		5		5	NUT - EYE, 5/8", SS	565-00008
153		6		6	WASHER - FLAT SQ., 2 1/4", 11/16" HOLE, SS	973-00009
156		8		8	WASHER - FLAT SQ., 4", 7/8" HOLE, SS	973-00020
158		12		12	WASHER - LOCK, 5/8", SINGLE COIL, SS	973-00010
164		1		1	CLEVIS - SECONDARY, STAINLESS	185-00007



DATE: FEB. 2018

DRAWN: C. CRAIG

REV.: D

DATE: June 4, 2019

APPROVED BY: C. Rose

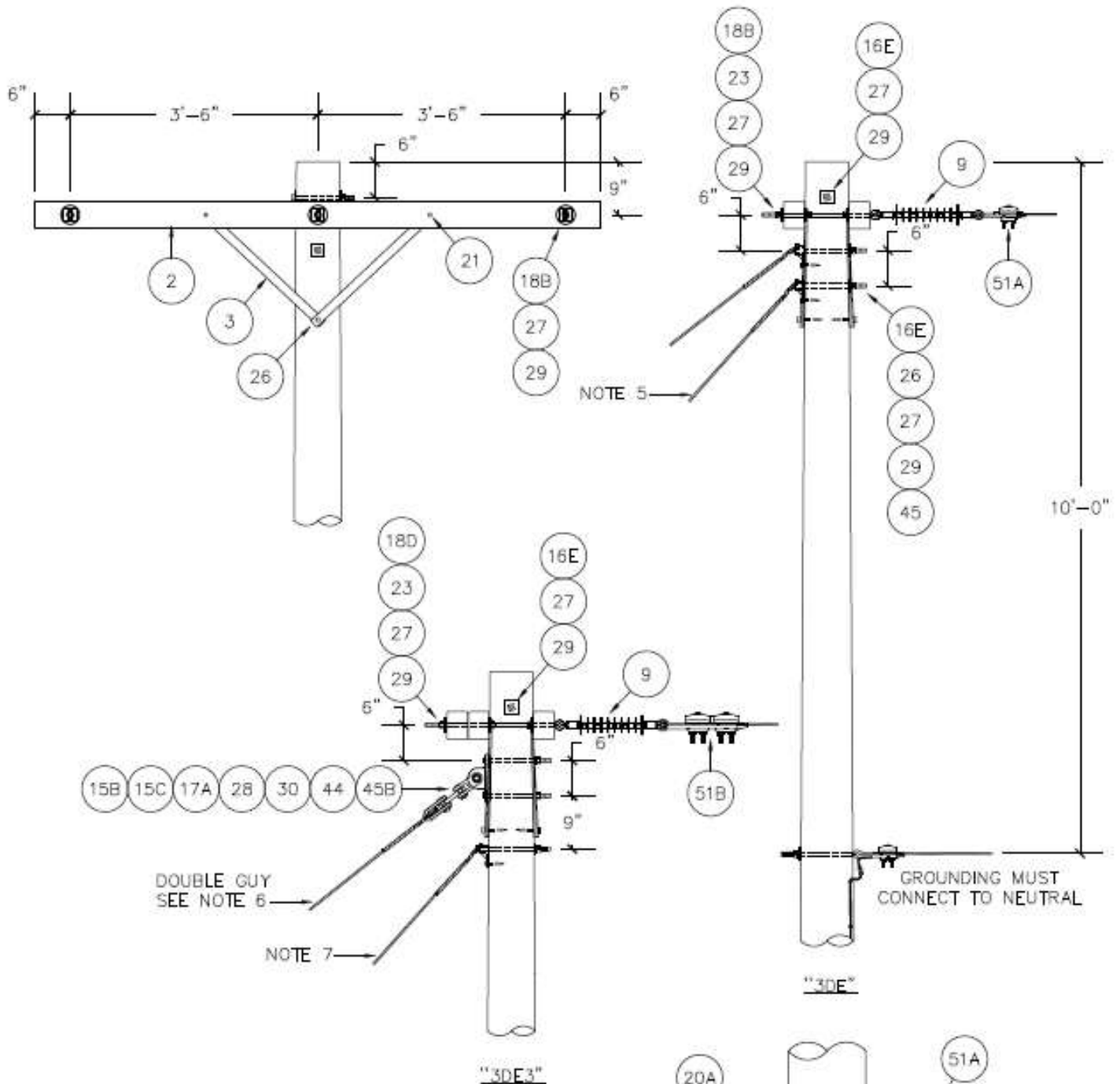
DATE: June 4, 2019

## DISTRIBUTION STANDARDS

### STRUCTURE "3D-EVF"

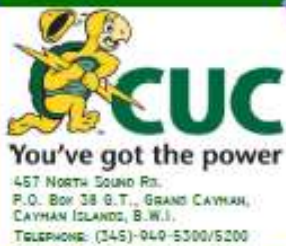
**STANDARD NO.**

**8-16**



**NOTES:**

1. FRAMING DETAILS, PAGE 8-3.
2. GROUNDING DETAILS PAGE 11-2/4.
3. GUYING REQUIREMENTS, PAGE 6-8/11.
4. TWO CROSSARMS ARE SUFFICIENT FOR 2/0 AAC. THREE CROSSARMS ARE REQUIRED FOR 4/0 AAC.
5. LOCATION OF SECOND GUY FOR 2/0 AAC, NOT REQUIRED WITH SECONDARY, PAGE 6-9.
6. USE 3/4" BOLTS FOR DOUBLE GUY ATTACHMENT.
7. ADD THIRD GUY FOR 477 AAC CONDUCTORS, PAGE 6-11.



DATE:	MAR. 2018
DRAWN:	C.CRAIG
REV:	B
DATE:	March 3, 2018
APP. BY:	
DATE:	

**DISTRIBUTION STANDARDS**

**STRUCTURE "3DE & 3DE3"**

PAGE  
1 of 2

STANDARD NO.  
8-17

ITEM	Quantity						DESCRIPTION	STOCK NO.
	3DE		3DE3					
	2/0		4/0		477			
	Galv.	SS	Galv.	SS	Galv.	SS		
2	2	2	3	3	3	3	CROSSARM - WOOD, TREATED, 3 5/8" X 4 5/8" X 8'0"	255-00001
3	2	2	2	2	2	2	BRACE - FLAT, FIBERGLASS, 28"	107-00001
9	3	3	3	3	3	3	INSULATOR - SUSPENSION, POLYMER, 25KV	457-00007
15B			2		2		CLEVIS - THIMBLE	New item
15C			1		1		CLEVIS - CLEVIS, 90°	New item
16E	3		1		2		BOLT - MACH, 5/8" X 12", Galv.	098-00015
17A			2		2		BOLT - MACH, 3/4" X 12", Galv.	098-00009
18B	3						BOLT - DA, 5/8" X 22", Galv.	098-00004
18D			3		3		BOLT - DA, 5/8" X 26", Galv.	098-00006
20A	1		1		1		BOLT - OVAL EYE, 5/8" X 12", Galv.	098-00021
21	4		4		4		BOLT - CARRIAGE, 3/8" X 5", Galv.	098-00002
23	3		3		3		NUT - OVAL EYE, 5/8", Galv.	565-00002
26	4		2		3		SCREW - LAG, TWIST DRIVE/DRIVE POINT, 1/2" X 4"	744-00002
27	16		14		15		WASHER - SQUARE, 2 1/4", 11/16" HOLE	973-00005
28			2		2		WASHER - CURVED, 3", 13/16" HOLE	973-00001
29	14		12		13		WASHER - LOCK, DOUBLE COIL, 5/8"	973-00011
30			2		2		WASHER - LOCK, DOUBLE COIL, 3/4"	973-00012
44			1		1		PLATE - GUY YOKE	New item
45	2				1		HOOK - GUY, DUCTILE IRON, 5/8", HDG	437-00001
45B			1		1		TEE - DEAD END	New item
51A	4	4	1	1			CLAMP - ST. LINE DEADEND, ALUM, 2-2/0	183-00002
51B			3	3	4	4	CLAMP - ST. LINE DEADEND, ALUM, 4/0-477	183-00003
80B	1	1	1	1			CRIMPIT - CABLELOK, ALUM, 2/0-2	253-00008
80D					1	1	CRIMPIT - CABLELOK, ALUM, 4/0-2	213-00005
82B	1	1	1	1	1	1	SLEEVE - SERVICE ENTRANCE, 2-6 (RED-BLUE)	785-00004
130		4		4		4	BOLT - CARRIAGE 3/8" X 5-1/2", SS	098-00035
131B		3					BOLT - D/A 5/8" X 22", SS	098-00044
131D				3		3	BOLT - D/A 5/8" X 26", SS	098-00054
135E		3		2		3	BOLT - MACHINE, 5/8" X 12", SS	098-00039
137B		1		1		1	BOLT - OVAL EYE, 5/8"X12", SS	098-00047
140		3		3		3	NUT - EYE, 5/8", SS	565-00008
148		4		4		5	SCREW - LAG, TWIST DRIVE/DRIVE POINT, 1/2" X 4", SS	New Item
153		16		16		17	WASHER - FLAT SQ., 2 1/4", 11/16" HOLE, SS	973-00009
158		14		14		15	WASHER - LOCK, 5/8", SINGLE COIL, SS	973-00010
163		2		2		3	HOOK - GUY, 5/8", STAINLESS STEEL	437-00002



DATE: MAR. 2018

DRAWN: C. CRAIG

REV.: C

DATE: June 3, 2019

APPROVED BY: C. Rose

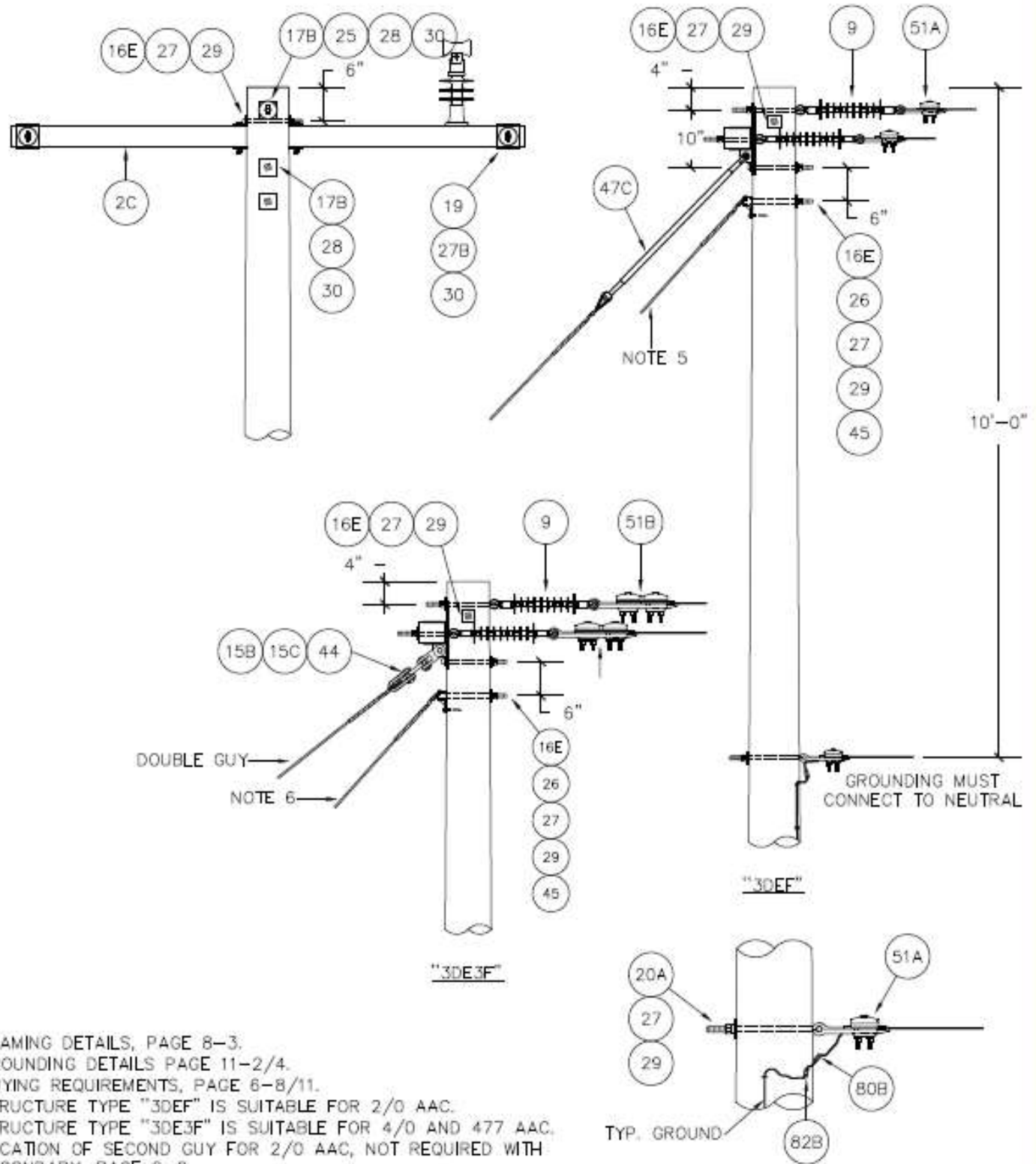
DATE: June 3, 2019

## DISTRIBUTION STANDARDS

### STRUCTURE "3DE & 3DE3"

**STANDARD NO.**

**8-17**



**NOTES:**

1. FRAMING DETAILS, PAGE 8-3.
2. GROUNDING DETAILS PAGE 11-2/4.
3. GUYING REQUIREMENTS, PAGE 6-8/11.
4. STRUCTURE TYPE "3DEF" IS SUITABLE FOR 2/0 AAC.  
STRUCTURE TYPE "3DE3F" IS SUITABLE FOR 4/0 AND 477 AAC.
5. LOCATION OF SECOND GUY FOR 2/0 AAC, NOT REQUIRED WITH SECONDARY, PAGE 6-8.
6. ADD THIRD GUY FOR 477 AAC CONDUCTORS, PAGE 6-11.



DATE:	JUN. 2019
DRAWN:	C.CRAIG
REV:	D
DATE:	June 13, 2019
APP. BY:	
DATE:	

<b>DISTRIBUTION STANDARDS</b>	
<b>STRUCTURE "3DEF"</b>	
PAGE 1 of 2	STANDARD NO. 8-18

ITEM	Quantity						DESCRIPTION	STOCK NO.
	3DEF		3DE3F					
	2/0		4/0		477			
	Galv.	SS	Galv.	SS	Galv.	SS		
2C	1	1	1	1	1	1	FIBERGLASS CROSSARM - DE 2500 SERIES 8'	255-00007
9	3	3	3	3	3	3	INSULATOR - SUSPENSION, POLYMER, 25KV	457-00007
15B			2		2		CLEVIS - THIMBLE	New item
15C			1		1		CLEVIS - CLEVIS, 90°	New item
16E	2		1		2		BOLT - MACH, 5/8" X 12", Galv.	098-00015
17B	2		2		2		BOLT - MACH, 3/4" X 14", Galv.	098-00010
19	2		2		2		BOLT - OVAL EYE, 3/4" X 8", Galv.	New item
20A	1		1		1		BOLT - OVAL EYE, 5/8" X 12", Galv.	098-00021
25	1		1		1		NUT - OVAL EYE, 3/4", Galv.	565-00001
26	1				1		SCREW - LAG, TWIST DRIVE/DRIVE POINT, 1/2" X 4"	744-00002
27	5		4		5		WASHER - SQUARE, 2 1/4", 11/16" HOLE	973-00005
27B	4		4		4		WASHER - SQUARE, 4", 13/16" HOLE	973-00004
28	2		2		2		WASHER - CURVED, 3", 13/16" HOLE	973-00001
29	3		2		3		WASHER - LOCK, DOUBLE COIL, 5/8"	973-00011
30	4		4		4		WASHER - LOCK, DOUBLE COIL, 3/4"	973-00012
44			1		1		PLATE - GUY YOKE	New item
45	1				1		HOOK - GUY, DUCTILE IRON, 5/8", HDG	437-00001
47C	1	1		1		1	INSULATOR - GUY STRAIN (LINK), C-TE, 54", 21000 LB	457-00002
51A	4	4	1	1			CLAMP - ST. LINE DEADEND, ALUM, 2-2/0	183-00002
51B			3	3	4	4	CLAMP - ST. LINE DEADEND, ALUM, 4/0-477	183-00003
80B	1	1	1	1			CRIMPIT - CABLELOK, ALUM, 2/0-2	253-00008
80D					1	1	CRIMPIT - CABLELOK, ALUM, 4/0-2	213-00005
82B	1	1	1	1	1	1	SLEEVE - SERVICE ENTRANCE, 2-6 (RED-BLUE)	785-00004
135E		2		2		3	BOLT - MACHINE, 5/8" X 12", SS	098-00039
136B		2		2		2	BOLT - MACHINE, 3/4" X 14", SS	098-00062
137B		1		1		1	BOLT - OVAL EYE, 5/8"X12", SS	098-00047
138		2		2		2	BOLT - OVAL EYE, 3/4" X 8"	098-00069
140B		1		1		1	NUT - EYE, 3/4", SS	New Item
148		1		1		2	SCREW - LAG, TWIST DRIVE/DRIVE POINT, 1/2" X 4", SS	New Item
151		2		2		2	WASHER - CURVED SQUARE, 3", 13/16" HOLE, SS	973-00018
153		5		5		6	WASHER - FLAT SQ., 2 1/4", 11/16" HOLE, SS	973-00009
156		4		4		4	WASHER - FLAT SQ., 4", 7/8" HOLE, SS	973-00020
158		3		3		4	WASHER - LOCK, 5/8", SINGLE COIL, SS	973-00010
159		4		4		4	WASHER - LOCK, 3/4", SINGLE COIL, SS	973-00017
163		1		1		2	HOOK - GUY, 5/8", STAINLESS STEEL	437-00002



DATE: MAR. 2018

DRAWN: C. CRAIG

REV.: D

DATE: June 3, 2019

APPROVED BY: C. Rose

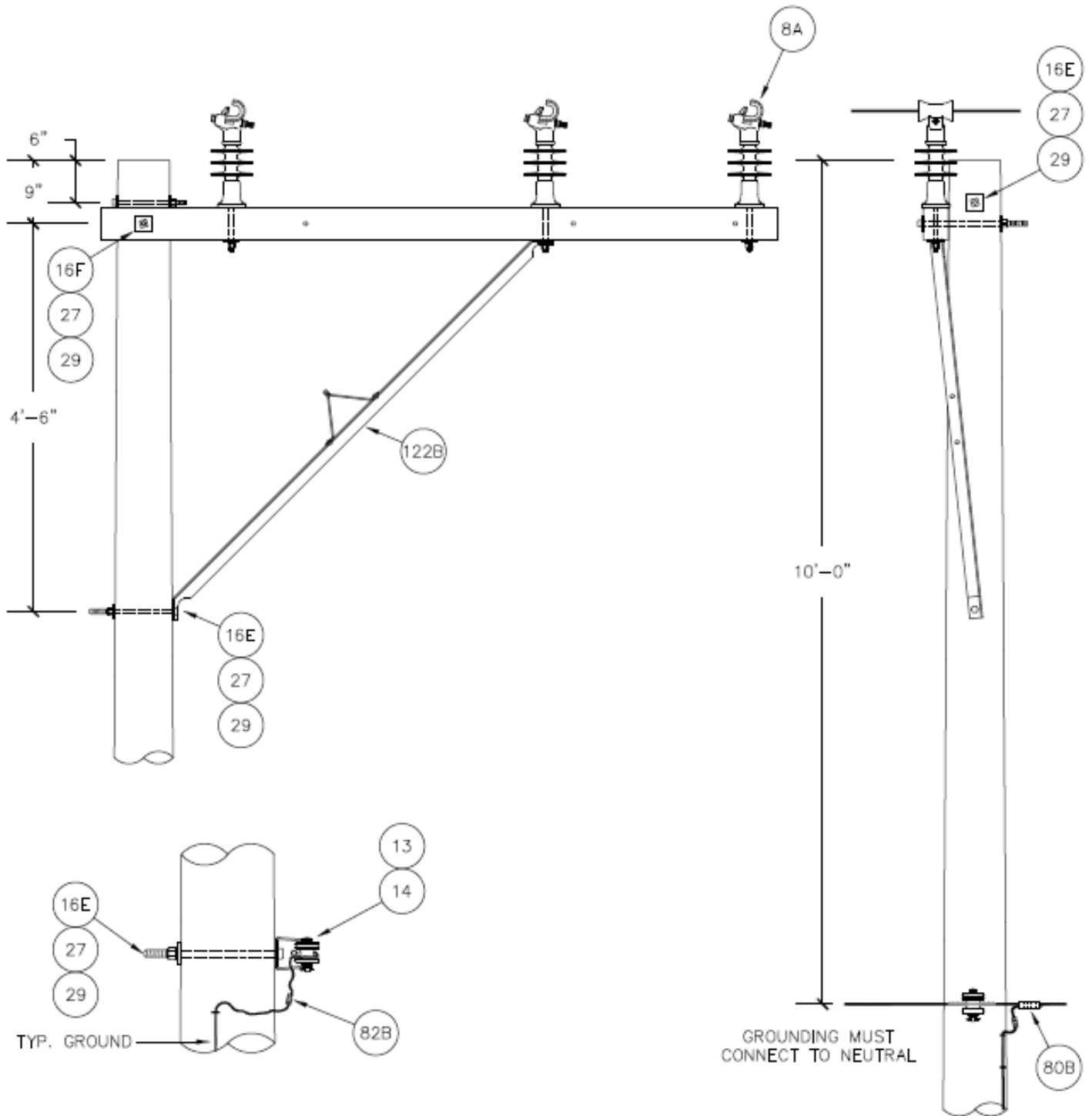
DATE: June 3, 2019

## DISTRIBUTION STANDARDS

### STRUCTURE "3DEF"

**STANDARD NO.**

**8-18**



NOTES:

1. FRAMING DETAILS, PAGE 8-4/5.
2. GROUNDING DETAILS PAGE 11-3/4.



DATE: MAY, 2018  
DRAWN: C.CRAIG

REV: B  
DATE: May 8, 2018

APP. BY:  
DATE:

**DISTRIBUTION STANDARDS**

**STRUCTURE "3AA"**

PAGE  
1 of 2

STANDARD NO.  
8-19



ITEM	Quantity		DESCRIPTION	STOCK NO.
	Galv.	SS		
2	1	1	CROSSARM - WOOD, TREATED, 3 5/8" X 4 5/8" X 8'0"	255-00001
8A	3		KTYPE INSULATOR, Galv Base	457-00012
8B		3	INSULATOR - KTYPE, AL BASE	457-00004
13	1	1	INSULATOR - SPOOL, CLASS 53-2	457-00008
14	1		CLEVIS - SECONDARY DEADEND, 3 1/2" X 4"	185-00002
16E	3		BOLT - MACH, 5/8" X 12", Galv.	098-00015
16F	1		BOLT - MACH, 5/8" X 14", Galv.	098-00016
27	6		WASHER - SQUARE, 2 1/4", 11/16" HOLE	973-00005
29	4		WASHER - LOCK, DOUBLE COIL, 5/8"	973-00011
80B	1	1	CRIMPIT - CABLELOK, ALUM, 2/0-2	253-00008
82B	1	1	SLEEVE - SERVICE ENTRANCE, 2-6 (RED-BLUE)	785-00004
122B	1		BRACE, ALLEY ARM 72"	New item
127A	3		STUD, 3/4" LINE POST INSULATOR, 5/8", LONG SHANK	840-00004
135E		3	BOLT - MACHINE, 5/8" X 12", SS	098-00039
135F		1	BOLT - MACHINE, 5/8" X 14", SS	098-00040
153		6	WASHER - FLAT SQ., 2 1/4", 11/16" HOLE, SS	973-00009
158		4	WASHER - LOCK, 5/8", SINGLE COIL, SS	973-00010
164		1	CLEVIS - SECONDARY, STAINLESS	185-00007
166B		3	STUD, 3/4" LINE POST AL. BASE INSULATOR, 5/8" DIA, SS	840-00005



DATE: MAY. 2018

DRAWN: C. CRAIG

REV.: C

DATE: June 4, 2019

APPROVED BY: C. Rose

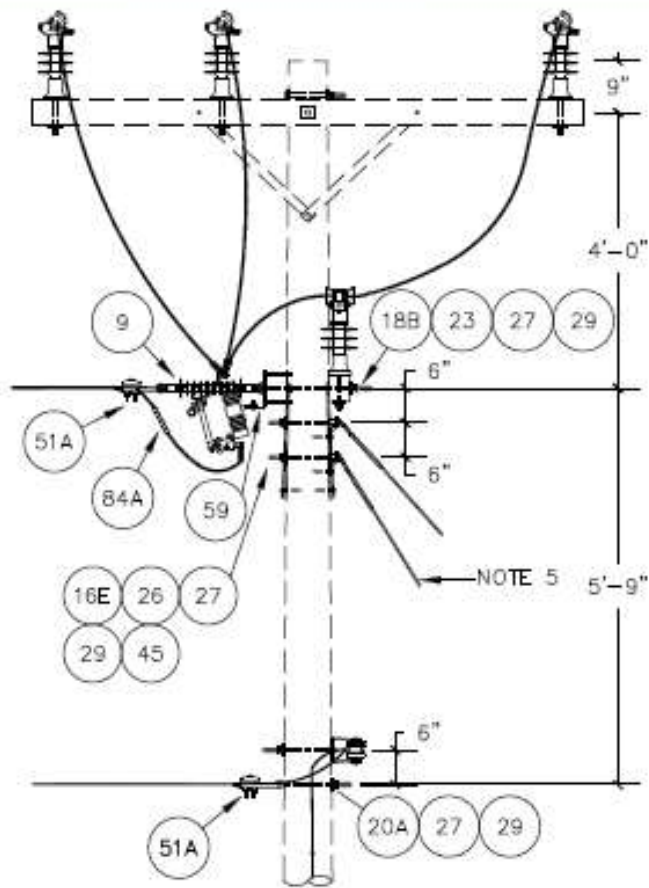
DATE: June 4, 2019

## DISTRIBUTION STANDARDS

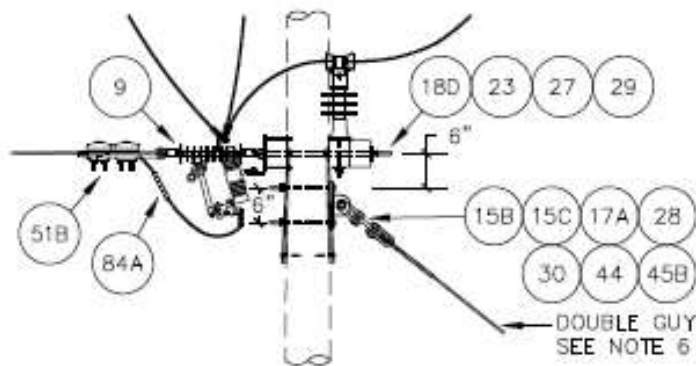
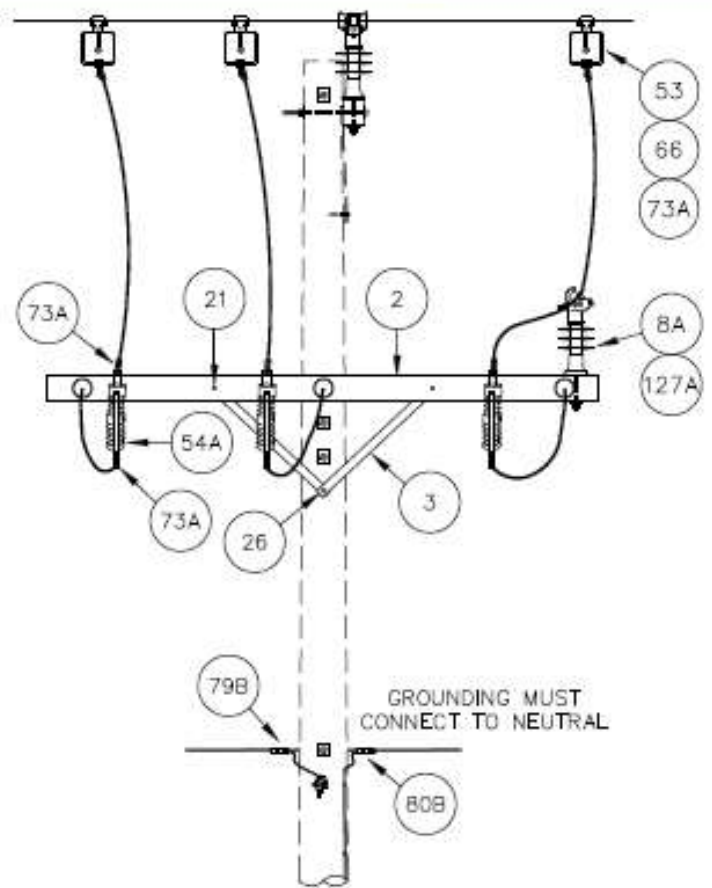
### STRUCTURE "3AA"

**STANDARD NO.**

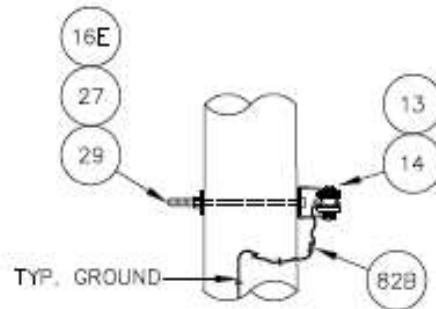
**8-19**



TYPE "3TD"

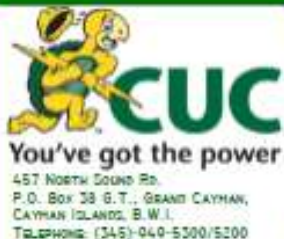


TYPE "3DX"



NOTES:

1. FRAMING DETAILS, PAGE 8-10.
2. GROUNDING DETAILS, PAGE 11-2/4.
3. STRUCTURE TYPE "3TD" THREE PHASE TAP WITH DISCONNECT. SUITABLE FOR DEADENDING CONDUCTOR SIZE 2/0 (DOUBLE ARM). STRUCTURE TYPE "3DX" THREE PHASE TAP WITH DISCONNECTS. SUITABLE FOR DEADENDING CONDUCTOR SIZE 4/0 (TRIPLE ARM).
4. MATERIAL LIST SPECIFIES FUSED CUTOUT, HOWEVER SOLID BLADE DISCONNECTS CAN ALSO BE USED IF REQUIRED. LOCATIONS TO BE SPECIFIED.
5. LOCATION FOR SECOND GUY FOR 2/0 AAC, NOT REQUIRED WITH SECONDARY GUY, PAGE 6-9.
6. USE 3/4" BOLTS FOR DOUBLE GUY ATTACHMENT.



DATE:	JUN. 2019
DRAWN:	C.CRAIG
REV:	A
DATE:	June 13, 2019
APP. BY:	
DATE:	

<b>DISTRIBUTION STANDARDS</b>	
<b>STRUCTURE "3TD"</b>	
PAGE 1 of 2	STANDARD NO. 8-20

ITEM	Quantity				DESCRIPTION	STOCK NO.
	3TD		3TDX			
	2/0		4/0			
	Galv.	SS	Galv.	SS		
2	2	2	3	3	CROSSARM - WOOD, TREATED, 3 5/8" X 4 5/8" X 8'0"	255-00001
3	2	2	2	2	BRACE - FLAT, FIBERGLASS, 28"	107-00001
8A	1		1		KTYPE INSULATOR, Galv Base	457-00012
8B		1		1	INSULATOR - KTYPE, AL BASE	457-00004
9	3	3	3	3	INSULATOR - SUSPENSION, POLYMER, 25KV	457-00007
15B			2		CLEVIS - THIMBLE	New item
15C			1		CLEVIS - CLEVIS, 90°	New item
16E	2				BOLT - MACH, 5/8" X 12", Galv.	098-00015
17A			2		BOLT - MACH, 3/4" X 12", Galv.	098-00009
18B	3				BOLT - DA, 5/8" X 22", Galv.	098-00004
18D			3		BOLT - DA, 5/8" X 26", Galv.	098-00006
20A	1		1		BOLT - OVAL EYE, 5/8" X 12", Galv.	098-00021
21	4		4		BOLT - CARRIAGE, 3/8" X 5", Galv.	098-00002
23	3		3		NUT - OVAL EYE, 5/8", Galv.	565-00002
26	4		2		SCREW - LAG, TWIST DRIVE/DRIVE POINT, 1/2" X 4"	744-00002
27	14		12		WASHER - SQUARE, 2 1/4", 11/16" HOLE	973-00005
28			2		WASHER - CURVED, 3", 13/16" HOLE	973-00001
29	13		11		WASHER - LOCK, DOUBLE COIL, 5/8"	973-00011
30			2		WASHER - LOCK, DOUBLE COIL, 3/4"	973-00012
44			1		PLATE - GUY YOKE	New item
45	2				HOOK - GUY, DUCTILE IRON, 5/8", HDG	437-00001
45B			1		TEE - DEAD END	New item
51A	4	4	1	1	CLAMP - ST. LINE DEADEND, ALUM, 2-2/0	183-00002
51B			3	3	CLAMP - ST. LINE DEADEND, ALUM, 4/0-477	183-00003
53	3	3	3	3	CLAMP - TAP BRONZE #8 SOL	183-00006
54	3	3	3	3	CUTOUT - DISTRIBUTION LOADBREAK POLYMER	264-00003
66	3	3	3	3	CLAMP - BAIL, 1/0 - 477	183-00001
73A	9	9			TERMINAL - COMPRESSION PIN, ALUM, 2/0	783-00001
73B			9	9	TERMINAL - COMPRESSION PIN, ALUM, 4/0	783-00002
79B	1	1	1	1	CRIMPIT - CTYPE, ALUM, 2/0	253-00002
84A	3	3			SLEEVE - JUMPER, ALUM, 2/0	783-00007
84B			3	3	SLEEVE - JUMPER, ALUM, 4/0	783-00008
127A	1		1		STUD, 3/4" LINE POST INSULATOR, 5/8", LONG SHANK	840-00004
130		4		4	BOLT - CARRIAGE 3/8" X 5-1/2", SS	098-00035
131B		3			BOLT - D/A 5/8" X 22", SS	098-00044
131D				3	BOLT - D/A 5/8" X 26", SS	098-00054
135E		2			BOLT - MACHINE, 5/8" X 12", SS	098-00039
137A		1		1	BOLT - OVAL EYE, 5/8" X 12", SS	098-00047
140		3		3	NUT - EYE, 5/8", SS	565-00008
148		2		2	SCREW - LAG, TWIST DRIVE/DRIVE POINT, 1/2" X 4", SS	New Item
153		14		14	WASHER - FLAT SQ., 2 1/4", 11/16" HOLE, SS	973-00009
158		13		13	WASHER - LOCK, 5/8", SINGLE COIL, SS	973-00010
163		2		2	HOOK - GUY, 5/8", STAINLESS STEEL	437-00002
166B		1		1	STUD, 3/4" LINE POST AL. BASE INSULATOR, 5/8" DIA, SS	840-00005



457 NORTH SOUND RD.  
P.O. BOX 38 G.T., GRAND CAYMAN,  
CAYMAN ISLANDS, B.W.I.  
TELEPHONE: (345)-945-5300/5200

DATE: APR. 2018

DRAWN: C. CRAIG

REV.: A

DATE: June 4, 2019

APPROVED BY: C. Rose

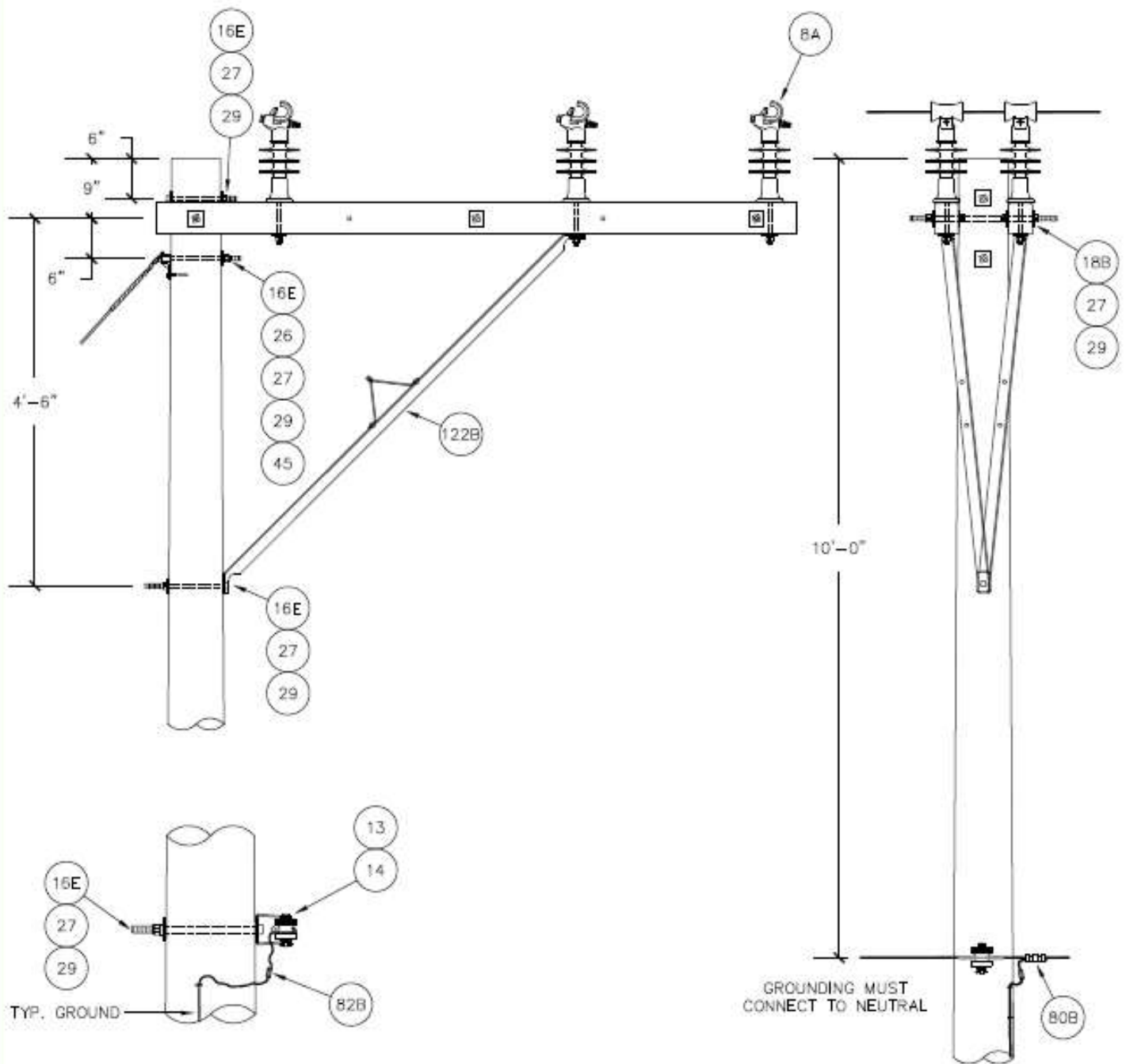
DATE: June 4, 2019

## DISTRIBUTION STANDARDS

### STRUCTURE "3TD"

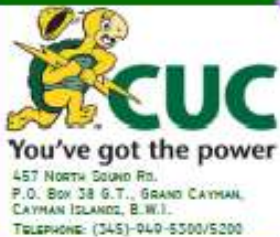
STANDARD NO.

8-20



**NOTES:**

1. FRAMING DETAILS, PAGE 8-4/5.
2. GROUNDING DETAILS PAGE 11-3/4.



DATE: MAY. 2018  
 DRAWN: C.CRAIG

REV:  
 DATE:

APP. BY:  
 DATE:

**DISTRIBUTION STANDARDS**

**STRUCTURE "3BA"**

PAGE  
 1 of 2

STANDARD NO.  
 8-21

ITEM	Quantity		DESCRIPTION	STOCK NO.
	Galv.	SS		
2	2	2	CROSSARM - WOOD, TREATED, 3 5/8" X 4 5/8" X 8'0"	255-00001
8A	6		KTYPE INSULATOR, Galv Base	457-00012
8B		6	INSULATOR - KTYPE, AL BASE	457-00004
13	1	1	INSULATOR - SPOOL, CLASS 53-2	457-00008
14	1		CLEVIS - SECONDARY DEADEND, 3 1/2" X 4"	185-00002
16E	4		BOLT - MACH, 5/8" X 12", Galv.	098-00015
18B	3		BOLT - DA, 5/8" X 22", Galv.	098-00004
26	1		SCREW - LAG, TWIST DRIVE/DRIVE POINT, 1/2" X 4"	744-00002
27	15		WASHER - SQUARE, 2 1/4", 11/16" HOLE	973-00005
29	14		WASHER - LOCK, DOUBLE COIL, 5/8"	973-00011
45	1		HOOK - GUY, DUCTILE IRON, 5/8", HDG	437-00001
80B	1	1	CRIMPIT - CABLELOK, ALUM, 2/0-2	253-00008
82B	1	1	SLEEVE - SERVICE ENTRANCE, 2-6 (RED-BLUE)	785-00004
122B	2	2	BRACE, ALLEY ARM 72"	New item
127A	6		STUD, 3/4" LINE POST INSULATOR, 5/8", LONG SHANK	840-00004
131B		3	BOLT - D/A 5/8" X 22", SS	098-00044
135E		4	BOLT - MACHINE, 5/8" X 12", SS	098-00039
153		15	WASHER - FLAT SQ., 2 1/4", 11/16" HOLE, SS	973-00009
158		14	WASHER - LOCK, 5/8", SINGLE COIL, SS	973-00010
163		1	HOOK - GUY, 5/8", STAINLESS STEEL	437-00002
164		1	CLEVIS - SECONDARY, STAINLESS	185-00007
166B		6	STUD, 3/4" LINE POST AL. BASE INSULATOR, 5/8" DIA, SS	840-00005



DATE: MAY. 2018

DRAWN: C. CRAIG

REV.: A

DATE: June 4, 2019

APPROVED BY: C. Rose

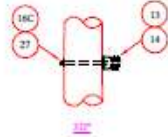
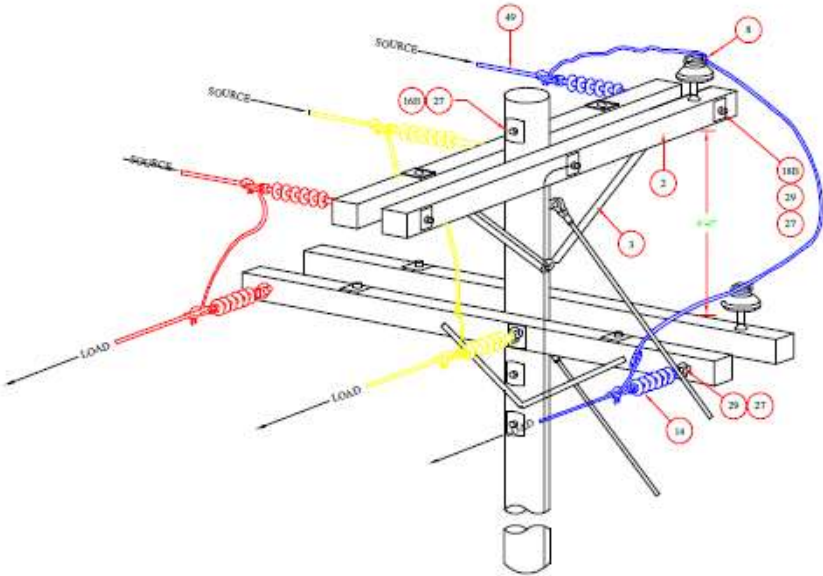
DATE: June 4, 2019

## DISTRIBUTION STANDARDS

### STRUCTURE "3BA"

**STANDARD NO.**

**8-21**



ITEM NO.	QUANTITY	MATERIAL	STOCK NO.
2	4	CROSSARM - WOOD #	255-0001
3	4	BRACE - FLAT #	107-0001
9	6	INSULATOR - SUSP POLYMER	457-0007
15	8	THIMBLE - CLEVIS	185-0000
18B	2	BOLT - MACH. 3/8"x12"	098-00014
18C	2	BOLT - MACH. 3/8"x12"	098-00012
18D	2	BOLT - D.A. 3/8"x28"	098-00006
18E	6	BOLT - D.A. 3/8"x22"	098-00006
20A	2	BOLT - OVAL EYE, 5/8" x 12"	098-00021
21	8	BOLT - CARBIDE, 3/8"x2"	098-00002
23	6	NUT - OVAL EYE, 3/8"	354-00002
26	4	SCREW - LAG, 1/2"x4"	744-00002
27	30	WASHER - SQUARE, 2"	975-00002
29	12	WASHER - LOCK, DL 3/8"	975-00011
40A		DEADEND PREFORM - 60	274-00003
40B		DEADEND PREFORM - 240	274-00002
TR	2	CRIMPIT - COPPER, 6-6	255-00003
TR	2	CRIMPIT - CABLELOK, 20x2	255-00008
TR	2	SLEEVE - SERVICI, 24	785-00009
TR	2	SLEEVE - SERVICI, 24	785-00009
TR	2	INSULATOR FOX-BOW	457-00001

All information contained within this drawing is the exclusive property of Caribbean Utilities Company Ltd. This drawing must not be reproduced or distributed to outside parties without the consent of Caribbean Utilities Company Ltd. By using this drawing the user agrees to abide by their terms and conditions.

CONSULTANTS

CONSTRUCTION

NO.	REVISION

PRODUCT  
CUC STANDARDS

DRAWN BY  
BUCK ARM

DATE:	1/1/2008
SCALE:	AS SHOWN
DRAWN BY:	JD
CHECKED BY:	REDAK/PC/DAVID
APPROVED BY:	REDAK/PC/DAVID

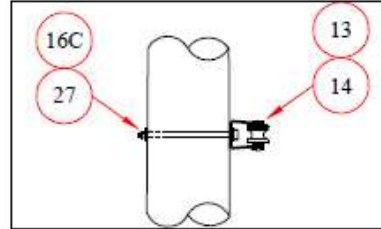
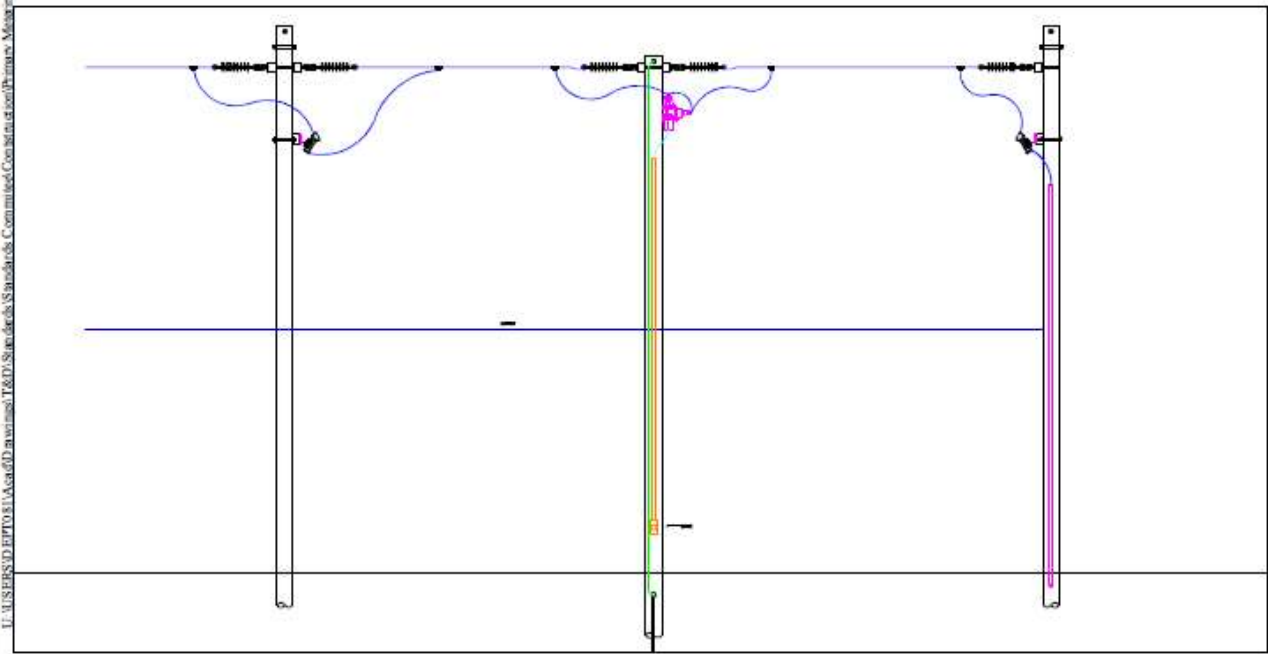
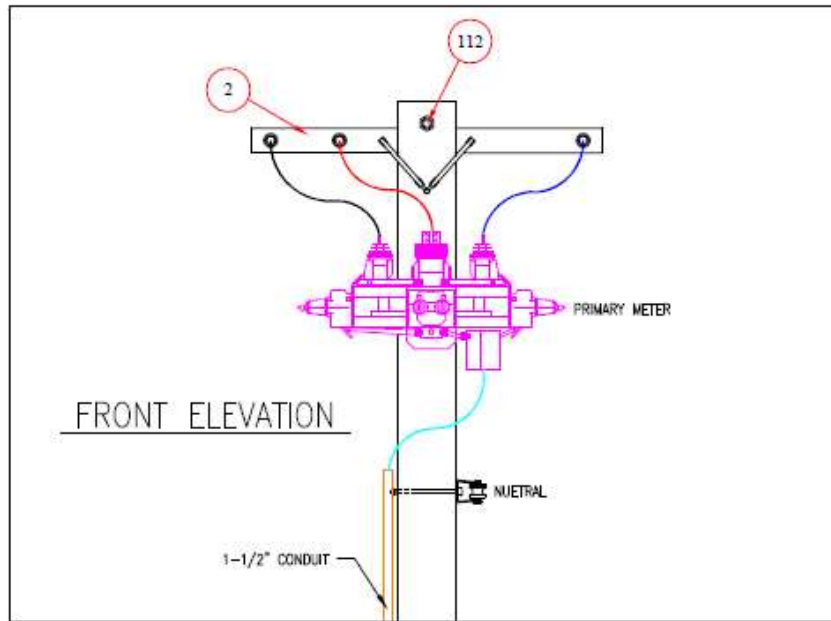
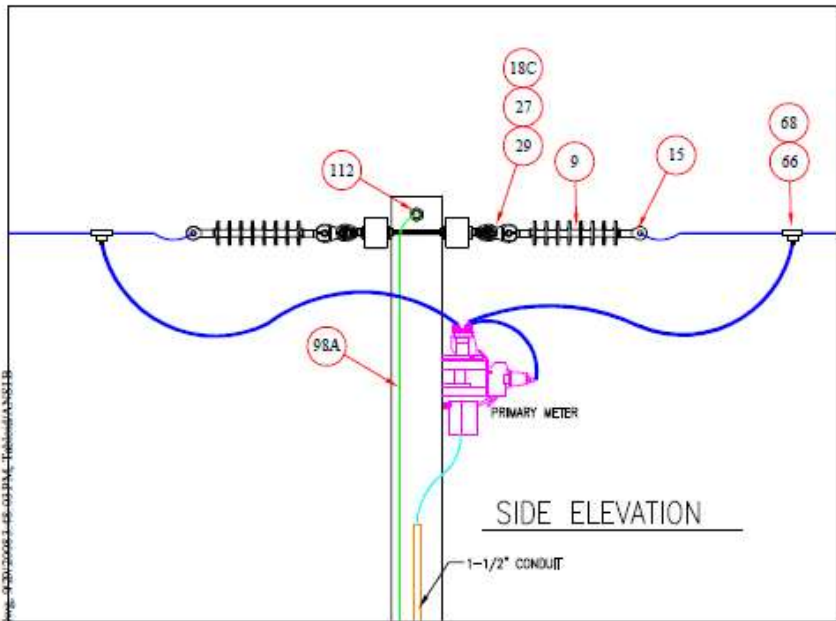
PRODUCT # \_\_\_\_\_  
SHEET # \_\_\_\_\_  
DRAWING # L-1  
REV # A



CARIBBEAN UTILITIES COMPANY, LTD.

427 South Central Ave.  
P.O. Box 22 012, Grand Cayman, Cayman Islands, BVI  
Telephone: (1-451-849-2100/2200)  
Facsimile: (1-451-949-4121, Fax# 449-3201)  
Email: [cust@cu.com.ky](mailto:cust@cu.com.ky)  
Web: [www.cu.com.ky](http://www.cu.com.ky)

U:\USERS\D EPT011\Asst\TD\Standards\Standards\Construction\Primary Metering (www.cuc.com) 11/15/11 11:00:00 AM



ITEM	QUANTITY	ITEM DESCRIPTION	STOCK NO.
2	2	CROSSARM - WOOD #	235-0001
3	4	BRACE-PLAT. 90	107-0003
21	4	BOX-T-CARRIAGE 5/8"	098-0002
28	2	SCREW-LAG, 1/2"	744-0002
11	1	INSULATOR - SPOOL	437-0008
14	1	CLEVIS 8-0	185-0002
8	8	INSULATOR-SUSPENSION, PLYMER 25KV	437-0007
15	3	CLEVIS-TIMBLE, CAST ALUM. 25-40	185-0003
18C	3	BOLT-DA, 3/8"	098-0009
27	13	WASHER-FLANGE 1/4" 11MP HOLE	973-0009
29	8	WASHER-LOCK, DOUBLE COIL, 5/8"x7/8"	973-0011
111	1	CLIP-ROUND WIRE	184-0003
98A	4F	WIRE-SHEATH CL-SOFT DRAWN #4 SOL.	983-0010
16C	3	BOLT - MACHINE, 5/8"x1/2	098-0013
66	8	CLAMP-SAIL, 46-477	183-0003
68	8	CLAMP-TAP	183-0008
	1	PRIMARY METERING UNIT	

All information contained within this drawing is the exclusive property of Caribbean Utilities Company, Ltd. This drawing must NOT be reproduced or distributed to outside parties without the consent of Caribbean Utilities Company, Ltd. By using this drawing the user agrees to abide by their governing terms and conditions.

CONSULTANTS

**CONSTRUCTION**

DATE	ISSUES

PRODUCT  
**CUC STANDARDS**

DRAWN BY  
**POLE MOUNTED PRIMARY METERING**

DATE:	2008/07/08
SCALE:	AS SHOWN
DRAWN BY:	DAK
CHECKED BY:	STANISLAW CHADAR
APPROVED BY:	STANISLAW CHADAR

PROJECT # \_\_\_\_\_  
SHEET # \_\_\_\_\_  
DRAWING # **L-1**  
REV. # \_\_\_\_\_



**CARIBBEAN UTILITIES COMPANY, LTD.**  
427 South Street Rd.  
P.O. Box 28 027, Grand Cayman, Cayman Islands, BVI  
Telephone: (868) 943-3100/3101/3102  
Facsimile: (868) (145) 943-4521, P.O. Box 248 3200  
Email: [cust@caribbean.com](mailto:cust@caribbean.com)  
Web: [www.cuc.com](http://www.cuc.com)